

HAMBLETON
DISTRICT COUNCIL

Council Tax

2021 - 22



a place to
grow

Dear Hambleton resident

After the challenging year we've all had, please let me start with some good news in these uncertain times - your council tax payment for the services received from Hambleton District Council will not increase this year.

This decision, taken by full Council on 23 February, is aimed at recognising the financial difficulties the Covid-19 crisis has created across our district. As Leader of the Council I think it's essential we offer practical support where we can, and this freeze in council tax, I hope, will do just that.

You will be pleased to hear that Hambleton District Council continues to offer the third lowest council tax in the country. This is all down to us delivering efficient, well run services combined with a prudent and sensible approach to our finances.

I must be clear that our decision not to increase council tax will in no way impact on the high level of service you expect and deserve from Hambleton District Council and we will continue to deliver an ambitious programme of development and growth projects across our district.

Like all councils, we face ongoing funding challenges and are determined to do all we can to secure our own financial future and protect the key services our communities tell us are essential.

Despite the challenge posed by local government reorganisation, our priorities for the next four years remain clear, we will:

- drive economic vitality
- enhance health and wellbeing
- care for the environment
- provide a special place to live

We are determined through hard work, forward planning, collaboration with partners and good leadership that Hambleton will continue to be a place to grow.

We know you are interested in how we spend council tax income, so hopefully this leaflet should tell you everything you need to know about council tax - what it is, what it pays for and the discounts available.

As Leader of the Council my commitment to you is to make sure every penny counts and is well spent in delivering the high quality council services you deserve.

Please take care and stay safe.



Councillor Mark Robson
Leader of Hambleton District Council

What is Council Tax?

Each year Hambleton District Council must set a level of council tax to raise income which is sufficient to meet the expenditure requirements of providing its services. The council receives a share of government grant and a contribution from the business rate retention scheme. These receipts are deducted from the council's expenditure requirement leaving the balance to be collected as council tax.

Council Tax bands

Your council tax demand notice is based upon your council tax banding figure which relates to the capital value of your property in 1991. Council tax bands are used to determine the level of council tax you need to pay.

*Based on the value of your property on 1 April 1991 your home has been allocated one of eight possible bands.



A

Up to
£40,000
6/9^{ths}*



B

Over £40,001
and up to
£52,000
7/9^{ths}*



C

Over £52,001
and up to
£68,000
8/9^{ths}*



D

Over £68,001
and up to
£88,000
9/9^{ths}*



E

Over £88,001
and up to
£120,000
11/9^{ths}*



F

Over £120,001
and up to
£160,000
13/9^{ths}*



G

Over £160,001
and up to
£320,000
15/9^{ths}*



H

Over
£320,001
18/9^{ths}*

Your council tax demand notice is based upon your council tax banding figure which relates to the capital value of your property in 1991. Council tax bands are used to determine the level of council tax you need to pay.

The diagram shows that the amount of council tax you pay is based on a Band D property. This is shown by Band D representing 9/9ths which totals council tax of £1,913.65 in 2021/22.

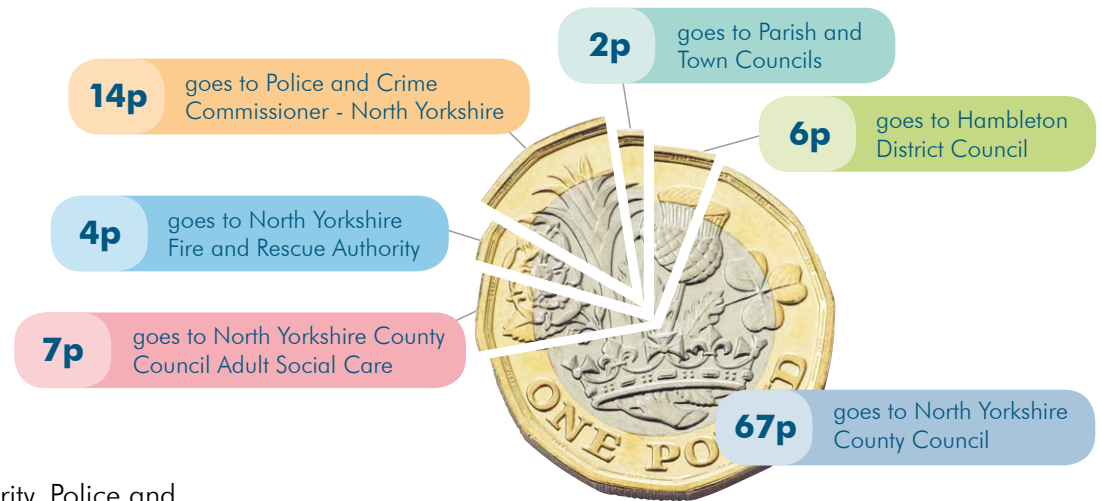
The proportion of a Band D property you then pay for other bands is calculated on 9ths of a Band D property.

For example a Band A property is 6/9ths of a Band D ie $£1,913.65 * 6/9ths = £1,275.77$

Whereas a Band H would be $£1,913.65 * 18/9ths = £3,827.30$

Where does the money go to?

The money Hambleton District Council collects is not all retained for the district council, in fact the council only keeps about 6% of all the council tax collected. 94% is split between the following authorities. For every £1 you pay in council tax for a band D property...



Calculating the Total Council Tax

Hambleton District Council is required to collect £4,275,014.05 of council tax to enable it to provide its services to the public.

North Yorkshire County Council, North Yorkshire Fire and Rescue Authority, Police and Crime Commissioner for North Yorkshire and parish and town councils also request Hambleton District Council to collect money on their behalf.

The amount of council tax payable by a resident is calculated by dividing each requirement (precept) by the number of properties in the area that are equivalent to a Band 'D'. In 2021/22 the number of Band D equivalent properties is 37,342.89

The table below shows the details that make up your council tax.

	Total amount to be raised from Council Tax (Precept) (£)	Band D Council Tax Base	Council Tax for Band D Property (£)	Proportion of Council Tax (%)
Hambleton District Council	4,275,014.05	37,342.89	114.48	5.98
North Yorkshire County Council	47,453,104.04	37,342.89	1,270.74	66.40
North Yorkshire County Council Adult Social Care	5,239,580.90	37,342.89	140.31	7.33
North Yorkshire Fire and Rescue Authority	2,768,601.86	37,342.89	74.14	3.88
Police and Crime Commissioner - North Yorkshire	10,122,164.00	37,342.89	271.06	14.17
Parish and Town Councils	1,602,898.89	37,342.89	42.92	2.24
Total/Average Band D Council Tax	71,461,363.74	37,342.89	1,913.65	100.00

How do we Spend the Money?

In 2021/22 Hambleton District Council is planning to spend £10,351,080 of revenue expenditure to provide its services which benefit not only the council taxpayer but also the business community. The table below shows Hambleton's expenditure and how it is funded:

2020/21			Provision of Service	2021/22		
Gross Expenditure	Gross Income	Net Expenditure		Gross Expenditure	Gross Income	Net Expenditure
£	£	£		£	£	£
7,672,800	(5,528,410)	2,144,390	Economy and Planning	7,598,310	(5,797,650)	1,800,660
7,425,750	(3,364,680)	4,061,070	Environment	7,781,150	(3,488,280)	4,292,870
20,660,690	(20,637,360)	23,330	Finance and Commercial	21,302,600	(20,338,860)	963,740
8,183,110	(6,326,140)	1,856,970	Leisure and Communities	8,795,640	(6,474,750)	2,320,890
2,677,940	(1,326,700)	1,351,240	Law and Governance	2,981,180	(1,542,390)	1,438,790
148,600	-	148,600	Internal Drainage Boards	129,330	-	129,330
46,768,890	(37,183,290)	9,585,600	Total expenditure on services	48,588,210	(37,641,930)	10,946,280
		(315,930)	Less Financed from Reserves			(595,200)
		9,269,670	Total revenue budget			10,351,080
			Funded by:			
		(2,350,713)	Government Grants			(2,693,641)
		(3,668,073)	Business Rates			(3,353,084)
		17,441	Collection Fund			273,248
		3,268,325	Total revenue budget less funding			4,577,603
		996,790	Transfer to/(from) reserves			(302,589)
		4,265,115	Amount to be raised from council tax			4,275,014

Why has the Budget changed from last year?

Council Tax Requirement 2020/21	4,265,115
Change to Revenue Budget:	
Increase in inflation	132,890
Increase in net expenditure	948,520
Total change to Revenue Budget	1,081,410
Change to Funding:	
Increase in Government Grants	(342,928)
Decrease in Business Rates	314,989
Increase in Collection Fund Deficit	255,807
Total change in Funding	227,868
Increase in Transfer to Reserves	(1,299,379)
Total change in Council Tax Requirement	9,899
Council Tax Requirement 2021/22	4,275,014

Parish and Town Council Precepts

Parish	2020/21 *Precept	Council Tax at Band D 2021/22							Council Tax Charges 2021/22							
		Parish/ Town Council	Hambleton District Council	North Yorkshire County Council	North Yorkshire County Council (Adult Social Care)	Police and Crime Comissioner - North Yorkshire	North Yorkshire Fire Authority	TOTAL	Band A 6/9ths	Band B 7/9ths	Band C 8/9ths	Band D 9/9ths	Band E 11/9ths	Band F 13/9ths	Band G 15/9ths	Band H 18/9ths
	£	£	£	£	£	£	£	£	£	£	£	£	£	£	£	£
Ainderby Steeple	3,500.00	32.92	114.48	1,270.74	140.31	271.06	74.14	1,903.65	1,269.11	1,480.60	1,692.13	1,903.65	2,326.70	2,749.71	3,172.76	3,807.30
Aiskew	28,000.00	27.75	114.48	1,270.74	140.31	271.06	74.14	1,898.48	1,265.66	1,476.58	1,687.54	1,898.48	2,320.38	2,742.24	3,164.14	3,796.96
Aldwark, Flawith and Youlton	4,200.00	27.17	114.48	1,270.74	140.31	271.06	74.14	1,897.90	1,265.27	1,476.13	1,687.02	1,897.90	2,319.67	2,741.41	3,163.17	3,795.80
Alne	19,000.00	58.42	114.48	1,270.74	140.31	271.06	74.14	1,929.15	1,286.11	1,500.44	1,714.80	1,929.15	2,357.86	2,786.54	3,215.26	3,858.30
Appleton Wiske	7,230.00	36.09	114.48	1,270.74	140.31	271.06	74.14	1,906.82	1,271.22	1,483.07	1,694.95	1,906.82	2,330.57	2,754.29	3,178.04	3,813.64
Bagby and Balk	7,000.00	27.77	114.48	1,270.74	140.31	271.06	74.14	1,898.50	1,265.67	1,476.60	1,687.55	1,898.50	2,320.40	2,742.27	3,164.17	3,797.00
Bedale	64,264.00	54.15	114.48	1,270.74	140.31	271.06	74.14	1,924.88	1,283.26	1,497.12	1,711.00	1,924.88	2,352.64	2,780.38	3,208.14	3,849.76
Bilsdale Midcable	2,100.00	12.77	114.48	1,270.74	140.31	271.06	74.14	1,883.50	1,255.67	1,464.93	1,674.22	1,883.50	2,302.07	2,720.61	3,139.17	3,767.00
Borrowby	3,000.00	15.44	114.48	1,270.74	140.31	271.06	74.14	1,886.17	1,257.45	1,467.01	1,676.59	1,886.17	2,305.33	2,724.46	3,143.62	3,772.34
Brafferton and Helperby	13,800.00	39.98	114.48	1,270.74	140.31	271.06	74.14	1,910.71	1,273.81	1,486.10	1,698.41	1,910.71	2,335.32	2,759.91	3,184.52	3,821.42
Brandsby - cum - Stearsby	2,500.00	17.11	114.48	1,270.74	140.31	271.06	74.14	1,887.84	1,258.57	1,468.31	1,678.08	1,887.84	2,307.37	2,726.87	3,146.41	3,775.68
Brompton	54,000.00	60.72	114.48	1,270.74	140.31	271.06	74.14	1,931.45	1,287.64	1,502.23	1,716.84	1,931.45	2,360.67	2,789.87	3,219.09	3,862.90
Burneston,Swainby with Allerthorpe and Theakston	4,898.68	28.90	114.48	1,270.74	140.31	271.06	74.14	1,899.63	1,266.43	1,477.48	1,688.56	1,899.63	2,321.78	2,743.90	3,166.06	3,799.26
Carlton-in-Cleveland	7,144.76	50.54	114.48	1,270.74	140.31	271.06	74.14	1,921.27	1,280.85	1,494.31	1,707.79	1,921.27	2,348.23	2,775.16	3,202.12	3,842.54
Carlton Husthwaite	1,936.00	24.61	114.48	1,270.74	140.31	271.06	74.14	1,895.34	1,263.57	1,474.14	1,684.75	1,895.34	2,316.54	2,737.71	3,158.91	3,790.68
Carlton Miniott	7,098.76	17.80	114.48	1,270.74	140.31	271.06	74.14	1,888.53	1,259.03	1,468.84	1,678.69	1,888.53	2,308.22	2,727.87	3,147.56	3,777.06
Carthorpe	2,700.00	23.38	114.48	1,270.74	140.31	271.06	74.14	1,894.11	1,262.75	1,473.18	1,683.65	1,894.11	2,315.04	2,735.93	3,156.86	3,788.22
Coxwold	3,400.00	35.50	114.48	1,270.74	140.31	271.06	74.14	1,906.23	1,270.83	1,482.61	1,694.43	1,906.23	2,329.85	2,753.44	3,177.06	3,812.46
Crakehall with Langthorne	10,000.00	35.10	114.48	1,270.74	140.31	271.06	74.14	1,905.83	1,270.56	1,482.30	1,694.07	1,905.83	2,329.36	2,752.86	3,176.39	3,811.66
Crathorne	850.00	10.56	114.48	1,270.74	140.31	271.06	74.14	1,881.29	1,254.20	1,463.21	1,672.26	1,881.29	2,299.37	2,717.41	3,135.49	3,762.58
Crayke	3,408.00	17.75	114.48	1,270.74	140.31	271.06	74.14	1,888.48	1,258.99	1,468.81	1,678.65	1,888.48	2,308.15	2,727.80	3,147.47	3,776.96
Dalton	8,500.00	27.93	114.48	1,270.74	140.31	271.06	74.14	1,898.66	1,265.78	1,476.72	1,687.70	1,898.66	2,320.60	2,742.50	3,164.44	3,797.32
Danby Wiske with Lazenby	3,100.00	24.70	114.48	1,270.74	140.31	271.06	74.14	1,895.43	1,263.63	1,474.21	1,684.83	1,895.43	2,316.65	2,737.84	3,159.06	3,790.86
Easby	300.00	5.97	114.48	1,270.74	140.31	271.06	74.14	1,876.70	1,251.14	1,459.64	1,668.18	1,876.70	2,293.76	2,710.78	3,127.84	3,753.40
Easingwold	140,942.00	60.51	114.48	1,270.74	140.31	271.06	74.14	1,931.24	1,287.50	1,502.06	1,716.66	1,931.24	2,360.42	2,789.56	3,218.74	3,862.48

*A precept is the amount of money towns/parishes and local authorities need to raise from council tax to fund their activities

		Council Tax at Band D 2021/22							Council Tax Charges 2021/22							
Parish	2020/21 *Precept	Parish/ Town Council	Hambleton District Council	North Yorkshire County Council	North Yorkshire County Council (Adult Social Care)	Police and Crime Commissioner - North Yorkshire	North Yorkshire Fire Authority	TOTAL	Band A 6/9ths	Band B 7/9ths	Band C 8/9ths	Band D 9/9ths	Band E 11/9ths	Band F 13/9ths	Band G 15/9ths	Band H 18/9ths
	£	£	£	£	£	£	£	£	£	£	£	£	£	£	£	£
East Cowton	6,704.00	26.73	114.48	1,270.74	140.31	271.06	74.14	1,897.46	1,264.98	1,475.79	1,686.63	1,897.46	2,319.13	2,740.77	3,162.44	3,794.92
East Harlsey	3,100.00	23.84	114.48	1,270.74	140.31	271.06	74.14	1,894.57	1,263.05	1,473.54	1,684.06	1,894.57	2,315.60	2,736.60	3,157.62	3,789.14
Exelby, Leeming and Londonderry	13,000.00	21.46	114.48	1,270.74	140.31	271.06	74.14	1,892.19	1,261.47	1,471.69	1,681.95	1,892.19	2,312.69	2,733.16	3,153.66	3,784.38
Faceby	1,500.00	15.11	114.48	1,270.74	140.31	271.06	74.14	1,885.84	1,257.23	1,466.75	1,676.30	1,885.84	2,304.93	2,723.99	3,143.07	3,771.68
Farlington	480.00	8.47	114.48	1,270.74	140.31	271.06	74.14	1,879.20	1,252.81	1,461.59	1,670.40	1,879.20	2,296.81	2,714.39	3,132.01	3,758.40
Great Ayton	105,000.00	55.56	114.48	1,270.74	140.31	271.06	74.14	1,926.29	1,284.20	1,498.21	1,712.26	1,926.29	2,354.37	2,782.41	3,210.49	3,852.58
Great and Little Broughton	12,500.00	23.63	114.48	1,270.74	140.31	271.06	74.14	1,894.36	1,262.91	1,473.38	1,683.87	1,894.36	2,315.34	2,736.29	3,157.27	3,788.72
Great Busby	300.00	6.26	114.48	1,270.74	140.31	271.06	74.14	1,876.99	1,251.33	1,459.87	1,668.43	1,876.99	2,294.11	2,711.20	3,128.32	3,753.98
Great Langton	750.00	13.77	114.48	1,270.74	140.31	271.06	74.14	1,884.50	1,256.34	1,465.71	1,675.11	1,884.50	2,303.29	2,722.05	3,140.84	3,769.00
Hackforth, Ainderby Miers with Holtby	2,600.00	28.39	114.48	1,270.74	140.31	271.06	74.14	1,899.12	1,266.09	1,477.08	1,688.11	1,899.12	2,321.16	2,743.17	3,165.21	3,798.24
Hillside (Boltby, Cowesby, Felixkirk, Kirby Knowle and Upsall)	600.00	2.50	114.48	1,270.74	140.31	271.06	74.14	1,873.23	1,248.83	1,456.94	1,665.09	1,873.23	2,289.52	2,705.77	3,122.06	3,746.46
Huby	9,715.00	19.71	114.48	1,270.74	140.31	271.06	74.14	1,890.44	1,260.30	1,470.33	1,680.39	1,890.44	2,310.55	2,730.63	3,150.74	3,780.88
Husthwaite	7,500.00	38.93	114.48	1,270.74	140.31	271.06	74.14	1,909.66	1,273.11	1,485.28	1,697.47	1,909.66	2,334.04	2,758.39	3,182.77	3,819.32
Hutton Rudby, Middleton, Rudby and Skutterskelfe	43,000.00	39.41	114.48	1,270.74	140.31	271.06	74.14	1,910.14	1,273.43	1,485.65	1,697.90	1,910.14	2,334.63	2,759.09	3,183.57	3,820.28
Ingleby Arncliffe	6,375.00	38.46	114.48	1,270.74	140.31	271.06	74.14	1,909.19	1,272.80	1,484.91	1,697.06	1,909.19	2,333.47	2,757.71	3,181.99	3,818.38
Ingleby Greenhow	6,662.50	38.72	114.48	1,270.74	140.31	271.06	74.14	1,909.45	1,272.97	1,485.12	1,697.29	1,909.45	2,333.78	2,758.09	3,182.42	3,818.90
Kilburn	6,500.00	53.48	114.48	1,270.74	140.31	271.06	74.14	1,924.21	1,282.81	1,496.60	1,710.41	1,924.21	2,351.82	2,779.41	3,207.02	3,848.42
Kirby Wiske and Newsham with Breckenbrough	2,975.00	25.99	114.48	1,270.74	140.31	271.06	74.14	1,896.72	1,264.49	1,475.21	1,685.97	1,896.72	2,318.23	2,739.70	3,161.21	3,793.44
Kirkby in Cleveland	4,300.00	26.56	114.48	1,270.74	140.31	271.06	74.14	1,897.29	1,264.87	1,475.66	1,686.48	1,897.29	2,318.92	2,740.52	3,162.16	3,794.58
Kirkby Fleetham with Fencotes	7,000.00	29.58	114.48	1,270.74	140.31	271.06	74.14	1,900.31	1,266.88	1,478.01	1,689.16	1,900.31	2,322.61	2,744.89	3,167.19	3,800.62
Kirklington cum Upsland, Howgrave and Sutton with Howgrave	2,300.00	16.23	114.48	1,270.74	140.31	271.06	74.14	1,886.96	1,257.98	1,467.62	1,677.30	1,886.96	2,306.30	2,725.60	3,144.94	3,773.92
Knayton with Brawith	3,226.21	19.41	114.48	1,270.74	140.31	271.06	74.14	1,890.14	1,260.10	1,470.10	1,680.12	1,890.14	2,310.18	2,730.20	3,150.24	3,780.28

*A precept is the amount of money towns/parishes and local authorities need to raise from council tax to fund their activities

Parish	2020/21 *Precept	Council Tax at Band D 2021/22							Council Tax Charges 2021/22							
		Parish/ Town Council	Hambleton District Council	North Yorkshire County Council	North Yorkshire County Council (Adult Social Care)	Police and Crime Comissioner - North Yorkshire	North Yorkshire Fire Authority	TOTAL	Band A 6/9ths	Band B 7/9ths	Band C 8/9ths	Band D 9/9ths	Band E 11/9ths	Band F 13/9ths	Band G 15/9ths	Band H 18/9ths
	£	£	£	£	£	£	£	£	£	£	£	£	£	£	£	£
Linton - on - Ouse	13,754.00	39.73	114.48	1,270.74	140.31	271.06	74.14	1,910.46	1,273.65	1,485.90	1,698.19	1,910.46	2,335.02	2,759.55	3,184.11	3,820.92
Low and High Worsall	5,196.00	35.55	114.48	1,270.74	140.31	271.06	74.14	1,906.28	1,270.86	1,482.65	1,694.47	1,906.28	2,329.91	2,753.51	3,177.14	3,812.56
Morton on Swale	9,200.00	34.48	114.48	1,270.74	140.31	271.06	74.14	1,905.21	1,270.15	1,481.82	1,693.52	1,905.21	2,328.60	2,751.96	3,175.36	3,810.42
Myton on Swale	800.00	11.28	114.48	1,270.74	140.31	271.06	74.14	1,882.01	1,254.68	1,463.77	1,672.90	1,882.01	2,300.25	2,718.45	3,136.69	3,764.02
Newby	1,885.00	16.23	114.48	1,270.74	140.31	271.06	74.14	1,886.96	1,257.98	1,467.62	1,677.30	1,886.96	2,306.30	2,725.60	3,144.94	3,773.92
Newton on Ouse	6,500.00	25.64	114.48	1,270.74	140.31	271.06	74.14	1,896.37	1,264.25	1,474.94	1,685.66	1,896.37	2,317.80	2,739.20	3,160.62	3,792.74
Northallerton	305,378.44	85.37	114.48	1,270.74	140.31	271.06	74.14	1,956.10	1,304.07	1,521.40	1,738.75	1,956.10	2,390.80	2,825.47	3,260.17	3,912.20
Osmotherley, Kirby Sigston, Ellerbeck, Sowerby under Cotcliffe, Thimbleby, Winton, Stank and Hallikeld and West Harley	14,000.00	30.18	114.48	1,270.74	140.31	271.06	74.14	1,900.91	1,267.28	1,478.47	1,689.70	1,900.91	2,323.35	2,745.75	3,168.19	3,801.82
Oulston	1,700.00	26.21	114.48	1,270.74	140.31	271.06	74.14	1,896.94	1,264.63	1,475.39	1,686.17	1,896.94	2,318.49	2,740.02	3,161.57	3,793.88
Overton	170.00	6.85	114.48	1,270.74	140.31	271.06	74.14	1,877.58	1,251.73	1,460.33	1,668.96	1,877.58	2,294.83	2,712.05	3,129.31	3,755.16
Pickhill with Roxby and Sinderby	3,360.00	13.92	114.48	1,270.74	140.31	271.06	74.14	1,884.65	1,256.44	1,465.83	1,675.24	1,884.65	2,303.47	2,722.27	3,141.09	3,769.30
Picton	400.00	6.77	114.48	1,270.74	140.31	271.06	74.14	1,877.50	1,251.67	1,460.27	1,668.89	1,877.50	2,294.73	2,711.94	3,129.17	3,755.00
Potto	7,000.00	46.14	114.48	1,270.74	140.31	271.06	74.14	1,916.87	1,277.92	1,490.89	1,703.88	1,916.87	2,342.85	2,768.81	3,194.79	3,833.74
Raskelf	5,275.00	21.44	114.48	1,270.74	140.31	271.06	74.14	1,892.17	1,261.45	1,471.68	1,681.93	1,892.17	2,312.66	2,733.13	3,153.62	3,784.34
Romanby	65,674.00	27.86	114.48	1,270.74	140.31	271.06	74.14	1,898.59	1,265.73	1,476.67	1,687.63	1,898.59	2,320.51	2,742.40	3,164.32	3,797.18
Rounton East and West	1,000.00	7.40	114.48	1,270.74	140.31	271.06	74.14	1,878.13	1,252.09	1,460.76	1,669.45	1,878.13	2,295.50	2,712.85	3,130.22	3,756.26
Sandhutton	4,040.00	37.59	114.48	1,270.74	140.31	271.06	74.14	1,908.32	1,272.22	1,484.24	1,696.28	1,908.32	2,332.40	2,756.46	3,180.54	3,816.64
Scruton	5,250.00	25.25	114.48	1,270.74	140.31	271.06	74.14	1,895.98	1,263.99	1,474.64	1,685.31	1,895.98	2,317.32	2,738.63	3,159.97	3,791.96
Seamer	5,000.00	18.02	114.48	1,270.74	140.31	271.06	74.14	1,888.75	1,259.17	1,469.02	1,678.89	1,888.75	2,308.48	2,728.19	3,147.92	3,777.50
Sessay and Hutton Sessay	6,000.00	30.42	114.48	1,270.74	140.31	271.06	74.14	1,901.15	1,267.44	1,478.66	1,689.91	1,901.15	2,323.64	2,746.10	3,168.59	3,802.30
Shipton by Beningbrough	7,821.00	27.26	114.48	1,270.74	140.31	271.06	74.14	1,897.99	1,265.33	1,476.20	1,687.10	1,897.99	2,319.78	2,741.54	3,163.32	3,795.98
Siltons with Kepwick	1,925.00	14.83	114.48	1,270.74	140.31	271.06	74.14	1,885.56	1,257.05	1,466.53	1,676.05	1,885.56	2,304.59	2,723.58	3,142.61	3,771.12
Snape with Thorp	8,216.00	46.46	114.48	1,270.74	140.31	271.06	74.14	1,917.19	1,278.13	1,491.14	1,704.17	1,917.19	2,343.24	2,769.27	3,195.32	3,834.38

*A precept is the amount of money towns/parishes and local authorities need to raise from council tax to fund their activities

		Council Tax at Band D 2021/22							Council Tax Charges 2021/22							
Parish	2020/21 *Precept	Parish/ Town Council	Hambleton District Council	North Yorkshire County Council	North Yorkshire County Council (Adult Social Care)	Police and Crime Comissioner - North Yorkshire	North Yorkshire Fire Authority	TOTAL	Band A 6/9ths	Band B 7/9ths	Band C 8/9ths	Band D 9/9ths	Band E 11/9ths	Band F 13/9ths	Band G 15/9ths	Band H 18/9ths
	£	£	£	£	£	£	£	£	£	£	£	£	£	£	£	£
Smeaton with Hornby (Great Smeaton, Little Smeaton and Hornby)	2,029.50	8.45	114.48	1,270.74	140.31	271.06	74.14	1,879.18	1,252.79	1,461.57	1,670.38	1,879.18	2,296.79	2,714.37	3,131.97	3,758.36
South Kilvington	2,500.00	24.60	114.48	1,270.74	140.31	271.06	74.14	1,895.33	1,263.56	1,474.13	1,684.74	1,895.33	2,316.53	2,737.69	3,158.89	3,790.66
South Otterington, Maunby and Newby Wiske	6,800.00	23.25	114.48	1,270.74	140.31	271.06	74.14	1,893.98	1,262.66	1,473.08	1,683.54	1,893.98	2,314.88	2,735.74	3,156.64	3,787.96
Sowerby	76,000.00	39.17	114.48	1,270.74	140.31	271.06	74.14	1,909.90	1,273.27	1,485.47	1,697.69	1,909.90	2,334.33	2,758.74	3,183.17	3,819.80
Stillington	10,750.00	27.80	114.48	1,270.74	140.31	271.06	74.14	1,898.53	1,265.69	1,476.62	1,687.58	1,898.53	2,320.44	2,742.32	3,164.22	3,797.06
Stokesley	144,000.00	67.25	114.48	1,270.74	140.31	271.06	74.14	1,937.98	1,291.99	1,507.31	1,722.65	1,937.98	2,368.65	2,799.30	3,229.97	3,875.96
Sutton under Whitestonecliffe	5,047.00	34.19	114.48	1,270.74	140.31	271.06	74.14	1,904.92	1,269.95	1,481.59	1,693.26	1,904.92	2,328.25	2,751.55	3,174.87	3,809.84
Sutton-on-the-Forest	16,000.00	40.51	114.48	1,270.74	140.31	271.06	74.14	1,911.24	1,274.17	1,486.51	1,698.88	1,911.24	2,335.97	2,760.67	3,185.41	3,822.48
Thirkleby High and Low with Osgodby	-	-	114.48	1,270.74	140.31	271.06	74.14	1,870.73	1,247.16	1,455.00	1,662.87	1,870.73	2,286.46	2,702.16	3,117.89	3,741.46
Thirn, Thornton Watlass, Clifton on Yore, Burrill with Cowling and Rookwith:																
1) Thirn, Thornton Watlass, Clifton on Yore and Rookwith	2,500.00	12.49	114.48	1,270.74	140.31	271.06	74.14	1,883.22	1,255.49	1,464.71	1,673.97	1,883.22	2,301.73	2,720.20	3,138.71	3,766.44
2) Burrill with Cowling	129.34	15.51	114.48	1,270.74	140.31	271.06	74.14	1,886.24	1,257.50	1,467.06	1,676.66	1,886.24	2,305.42	2,724.56	3,143.74	3,772.48
Thirsk	161,400.00	89.18	114.48	1,270.74	140.31	271.06	74.14	1,959.91	1,306.61	1,524.36	1,742.14	1,959.91	2,395.46	2,830.98	3,266.52	3,919.82
Tholthorpe	1,300.00	11.20	114.48	1,270.74	140.31	271.06	74.14	1,881.93	1,254.63	1,463.71	1,672.83	1,881.93	2,300.15	2,718.34	3,136.56	3,763.86
Thormanby	111.00	2.45	114.48	1,270.74	140.31	271.06	74.14	1,873.18	1,248.79	1,456.91	1,665.05	1,873.18	2,289.45	2,705.70	3,121.97	3,746.36
Thornton le Beans, Crosby and Cotcliffe	2,000.00	14.36	114.48	1,270.74	140.31	271.06	74.14	1,885.09	1,256.73	1,466.17	1,675.63	1,885.09	2,304.01	2,722.90	3,141.82	3,770.18
Thornton le Moor and Thornton le Street	2,152.50	10.77	114.48	1,270.74	140.31	271.06	74.14	1,881.50	1,254.34	1,463.38	1,672.44	1,881.50	2,299.62	2,717.72	3,135.84	3,763.00
Tollerton	8,713.00	19.91	114.48	1,270.74	140.31	271.06	74.14	1,890.64	1,260.43	1,470.49	1,680.57	1,890.64	2,310.79	2,730.92	3,151.07	3,781.28
Topcliffe	11,000.00	27.99	114.48	1,270.74	140.31	271.06	74.14	1,898.72	1,265.82	1,476.77	1,687.75	1,898.72	2,320.67	2,742.59	3,164.54	3,797.44
Welbury	1,050.00	8.91	114.48	1,270.74	140.31	271.06	74.14	1,879.64	1,253.10	1,461.93	1,670.79	1,879.64	2,297.35	2,715.03	3,132.74	3,759.28
Well	1,800.00	15.32	114.48	1,270.74	140.31	271.06	74.14	1,886.05	1,257.37	1,466.92	1,676.49	1,886.05	2,305.18	2,724.29	3,143.42	3,772.10
West Tanfield (and East)	8,188.00	30.55	114.48	1,270.74	140.31	271.06	74.14	1,901.28	1,267.53	1,478.76	1,690.03	1,901.28	2,323.80	2,746.29	3,168.81	3,802.56
Whorlton	10,924.20	40.09	114.48	1,270.74	140.31	271.06	74.14	1,910.82	1,273.89	1,486.18	1,698.51	1,910.82	2,335.46	2,760.07	3,184.71	3,821.64
TOTAL	1,602,898.89															

*A precept is the amount of money towns/parishes and local authorities need to raise from council tax to fund their activities

Town Council Precepts

If a Parish or Town Council requires a precept in excess of £140,000 to fund its spending plans, it has a statutory duty to publish details of its expenditure. The following town councils have exceeded this threshold, where Easingwold and Stokesley have exceeded it for the first time in 2021/22:

	Net Expenditure	
	2021/22	£
Easingwold Town Council		
Admin/Misc/Grants (office costs, staffing and administration)	56,922	
Recreation & Open Spaces (management of parks, woods and open spaces)	53,763	
Social Events (communications, events and donations)	15,450	
Operations (management of public toilets, town centre and markets)	27,125	
Total	153,260	
Transfer to/(from) reserves	(12,318)	
Precept	140,942	
Stokesley Town Council		£
Administration / Grants / Misc	64,900	
Grasscutting / Hedges / Tress	25,149	
Community Library	19,000	
Office Costs	10,800	
Open Spaces / Play Areas	8,580	
Events / Christmas Lights	8,000	
Insurances	4,500	
Toilets	4,000	
Professional Fees	2,600	
Town Wi-fi	1,000	
CCTV	1,000	
Contingency	2,000	
Allotments	(25)	
Total	151,504	
Transfer to/(from) reserves	(7,504)	
Precept	144,000	

	Net Expenditure	
	2020/21	2021/22
Northallerton Town Council		
Finance & General Purposes	306,400	325,960
Town Hall Maintenance & Improvements	139,300	102,300
Amenities Areas	63,300	67,800
Events & Christmas Illuminations	30,800	25,800
Projects (Play Areas & Renovations)	60,000	40,000
Total	599,800	561,860
Transfer to/(from) reserves	(294,422)	(256,482)
Precept	305,378	305,378
Thirsk Town Council		
Burial Board/Cemetery	19,617	19,750
Amenities	58,080	62,680
Administration/Misc/Grants	79,760	72,950
Millgate Toilets	18,000	20,000
Town Hall	4,000	4,500
Community Library	1,000	1,000
Youth Activities	10,000	5,000
Events	3,000	2,000
Capital	2,000	2,000
Contingencies	2,000	2,000
Miscellaneous Income	(8,000)	-
Total	189,457	191,880
Transfer to/(from) reserves	(45,357)	(30,480)
Precept	144,100	161,400



a place to
grow

HAMBLETON

DISTRICT COUNCIL

Civic Centre, Stone Cross, Rotary Way, Northallerton, North Yorkshire DL6 2UU
01609 779977

This information is available in alternative formats and languages