

Hambleton Community Safety
Partnership

Crime, Disorder and Drugs Audit 2004

Executive Summary Document

Version 1.2

Executive Summary

Crime, Disorder and Drugs Audit

Content

Introduction	2
Audit Methodology	3
• Background Information	
• Population & area	
Previous Strategy	4
• iQuanta Information	
• British Crime Survey	10
Audit Findings	11
• Crime Trends	11
• Offender Profile	
• Domestic Violence	14
• Hard To Reach Communities	15
• Anti-social Behaviour	16
• Criminal damage/vandalism	17
• Fire & Rescue	18
• Parish Council Survey	19
• Residents Survey	19
• Business Crime Consultation	20
• Hambleton Business Survey	21
Drugs Audit Findings	21

Introduction

The Crime and Disorder Act 1998 as amended by the Police Reform Act 2002 sets out statutory requirements for responsible authorities to work with other local agencies and organisations to develop and implement strategies to tackle crime and disorder and misuse of drugs in the District of Hambleton. These statutory partnerships are known as Crime and Disorder Reduction Partnerships (CDRPs). The responsible agencies are:

North Yorkshire Police
Hambleton District Council
North Yorkshire County Council
North Yorkshire Fire Service and Authority
North Yorkshire Police Authority
Hambleton and Richmondshire Primary Care Trust
North Yorkshire Moors National Park Authority

Within the Crime & Disorder Act 1998, under Section 17, the statutory agencies above and parish and town councils, have a duty to consider the impact of all their functions and decisions on crime and disorder in their local area. Every three years each area of England must produce a Crime Strategy which:

- Reviews the level and patterns of crime and disorder in an area, analyses the results of the review, publishes a report of the analysis and obtains views on the report from their partners (Crime & Disorder Act 1998, Section 6)
- Reviews levels and patterns of drug misuse in an area through building on the Drug Action Team (DAT) data and providing a needs analysis which assists a thorough understanding of the problems and needs of an area (National Drug Strategy Performance Management 2003)
- Addresses anti-social behaviour according to local priorities within Crime and Disorder Reduction Strategies

As a Partnership we understand that individual concerns about, and experience of crime, disorder, alcohol and drug misuse and anti-social behaviour significantly impact on the quality of life in the District. These concerns also affect the trust and confidence of the public in the services provided by the agencies that make up the Hambleton Community Safety Partnership.

This Crime, Disorder and Drugs Audit will be used to develop a new strategy which will run between 2005 and 2008 and provide details about how the Hambleton Community Safety Partnership will aim to reduce crime, disorder and misuse of alcohol and drugs, thus increasing community safety in the

District. The strategy will be supported by action plans and a robust system for managing performance and achievement of improved outcomes for local communities.

This summary document:

- Provides information about the audit process and background information about the District of Hambleton.
- Gives an overview of crime, disorder and substance misuse within the District.
- Makes a series of recommendations for future community safety priorities and initiatives to be included in the Strategy for 2005-2008.

Audit Methodology

In order to complete the audit, data has been collected from various partner agencies as far as possible covering a three year period 2001-2002 through to 2003-2004. This data has been collected primarily in the raw data form so that it can be converted into a meaningful picture for the Community Safety Partnership. The data has been presented back, in the form of Statistical Tables, Pie and Bar Charts, Trend Lines, and Geographically for agencies to undertake analysis and provide explanatory text.

Consultation with residents and businesses was conducted by using a variety of surveys aimed at different client groups including, businesses, organisations and the public. The audit process was advertised in the local press.

Despite best efforts and use of a wide range of approaches to achieve engagement in the Audit, response from the public and some organisations has been disappointing. Over the next three years the Crime and Disorder Reduction Partnership will be working towards full engagement for the next Audit (2007/08), through the implementation of a Project Management Framework and the Partnership Communications Strategy.

Background Information

Population and Area

Hambleton covers over 1,310 square kilometres and measures over 40 miles at its longest point, making it one of England's largest districts. It is home to 84,123 people, with a population density of approximately 65 people per square kilometre. Part of Hambleton falls within the North Yorkshire Moors National Park and the District is named after the Hambleton Hills. The District has a dispersed settlement pattern. It is dominated by the 5 historic market towns of Bedale, Easingwold, Northallerton, Stokesley and Thirsk, which account for about 42% of the District's population.

In social-economic terms Hambleton is relatively prosperous. Unemployment levels are half the national figure, running approximately 1.6%. None of the District's Ward unemployment levels exceeds the national average. There are some socio-economic issues in the area. For example, whilst Hambleton has relatively high levels of gross household income, a large proportion of its working population travels to work in other parts of the region. The more local economy is characterized by lower wage levels and relatively restricted employment opportunities. About 61% of businesses in Hambleton have experienced recruitment difficulties. This is the second highest figure in North Yorkshire.

In line with national trends, Hambleton has an aging population. For the first time nationally there are more people over 60 (21% of the population) than there are children under 16 (20%). In Hambleton this is even more pronounced, according to the 2001 Census 23% of the Districts residents are over 60 compared to just under 18% under 15.

Previous Strategy 2002 – 2005

The Hambleton Community Safety Partnership set targets in the 2002 - 2005 Community Safety Strategy by which to measure performance as detailed below. Although all these indicators are police led, partners have worked together on many initiatives to help meet the indicators.

Using an holistic multi agency approach may not, at this time, succeed in meeting all the ambitious targets set at the start of the last strategy but many of the actions have been met with the lead agencies understanding the benefit of working in partnership.

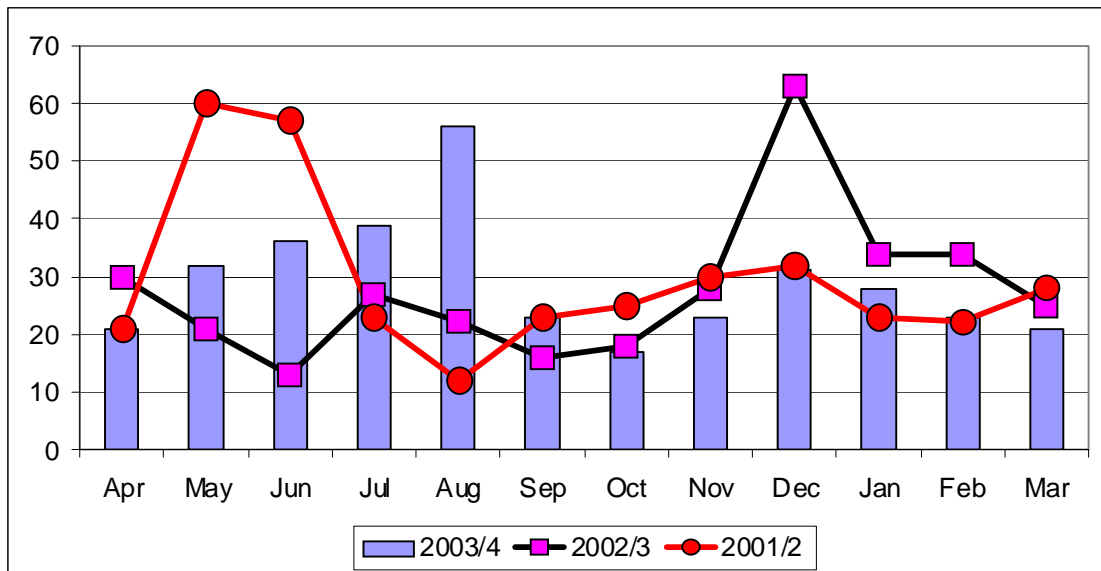
As part of this Audit a review of progress against the targets has been undertaken. It should be remembered, however, that many of the targets were set for a full 3 year period and the timing of the audit in order to formulate the next strategy means that this review is taking place six months before the anticipated end date of March 2005.

iQuanta Information

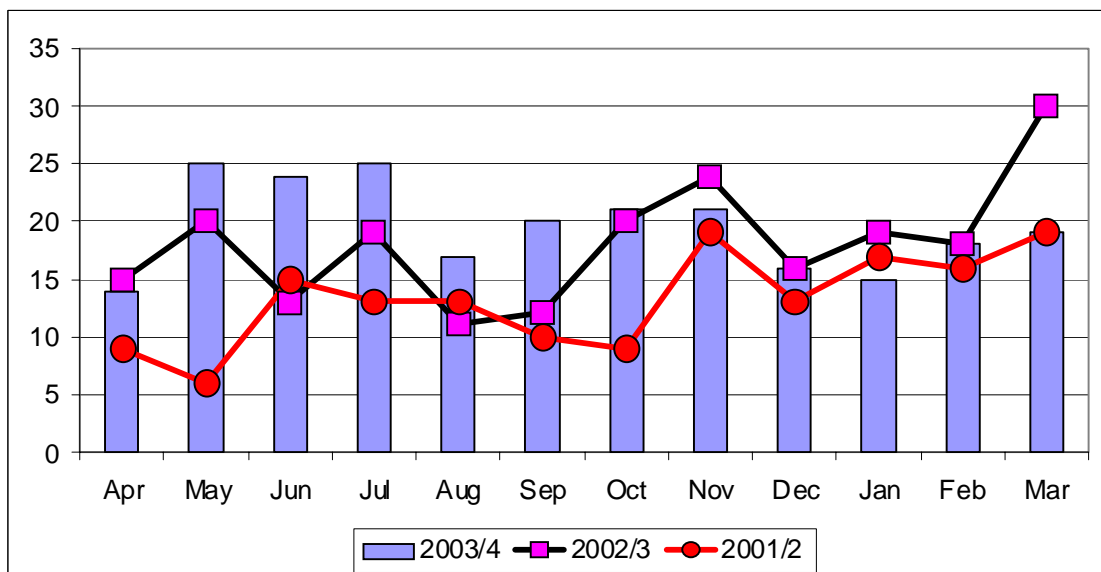
iQuanta brings together data for a range of key performance indicators from the National Policing Plan 2003-2006. This includes crime and personnel data supplied by forces as part of the Annual Data Requirement (ADR), the list of routine data requests made through the Home Office to all police services in England and Wales. These data are collected and made available by the Research, Development and Statistic Directorate (RDS) of the Home Office, who also provide results from the British Crime Survey on fear of crime and perceptions of the public.

iQuanta Crime Trend Information

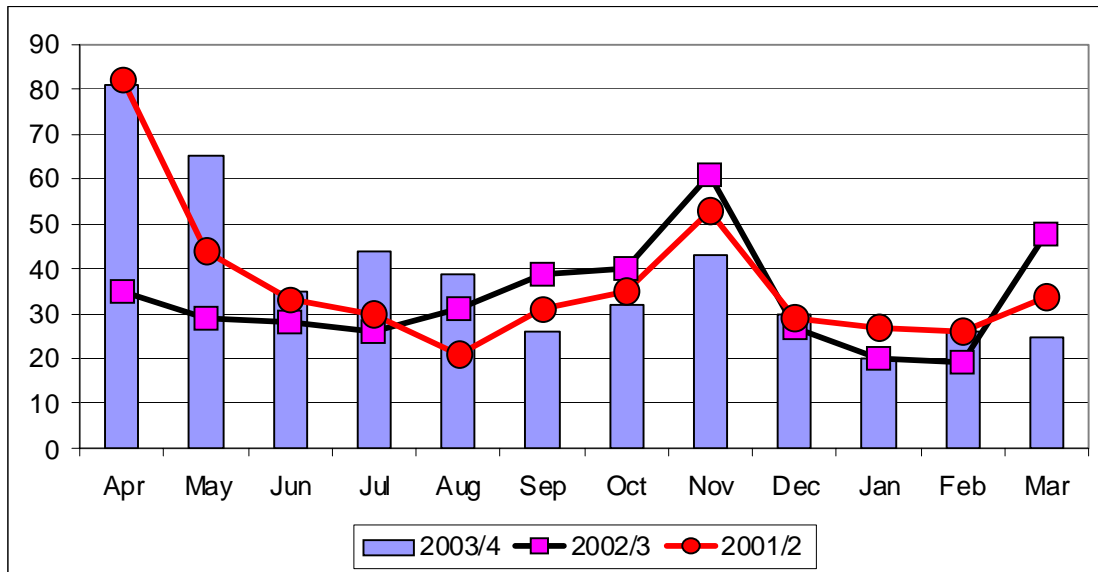
Burglary Dwelling by Months April 2001 to March 2003



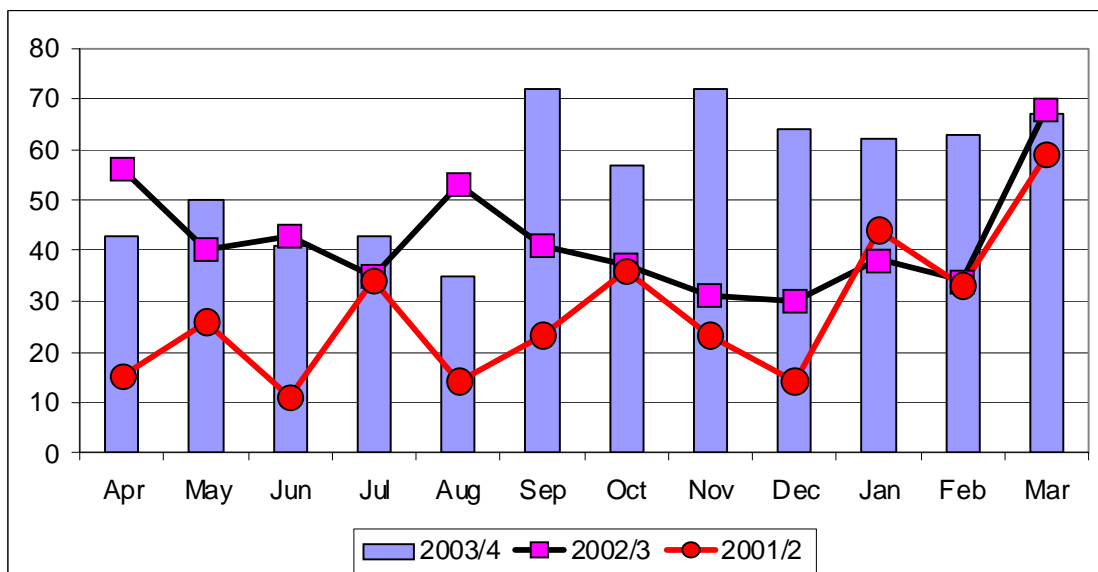
Stolen Motor Vehicles by Months April 2001 to March 2003



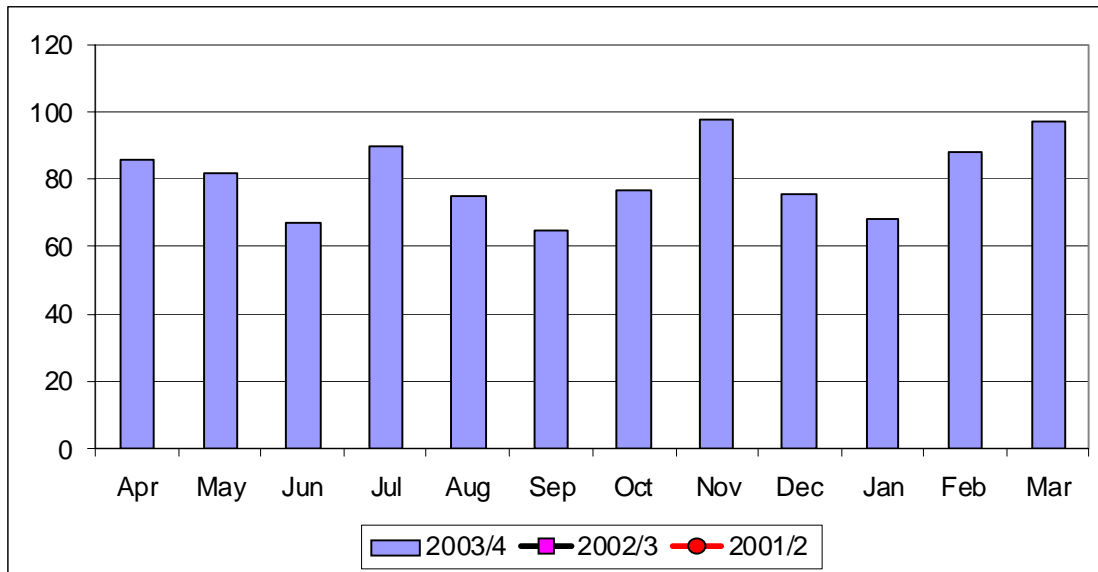
Theft from a Motor Vehicle by Months April 2001 to March 2003



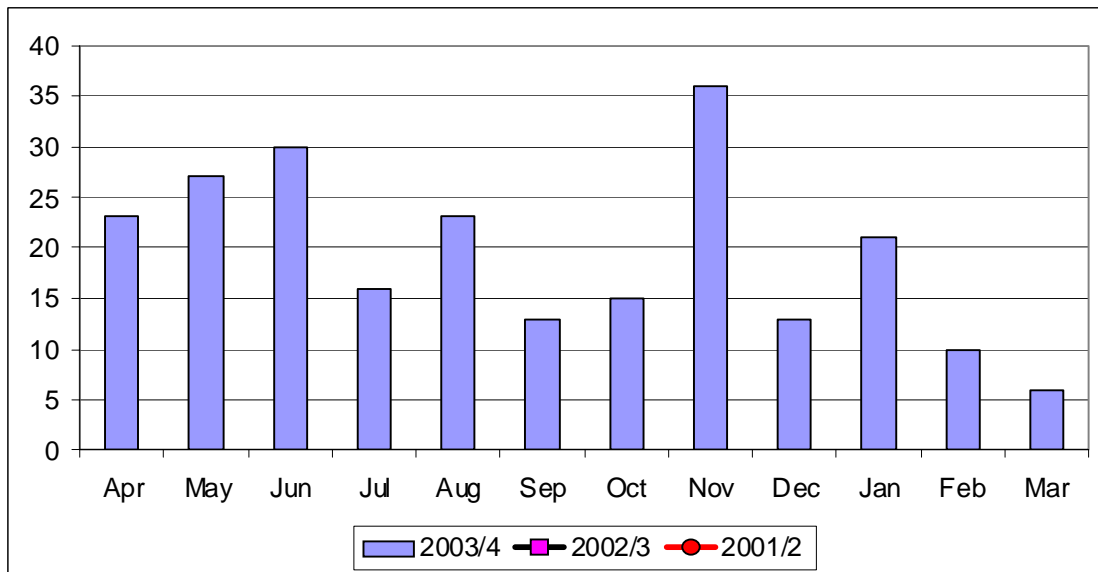
Violence by Months April 2001 to March 2003



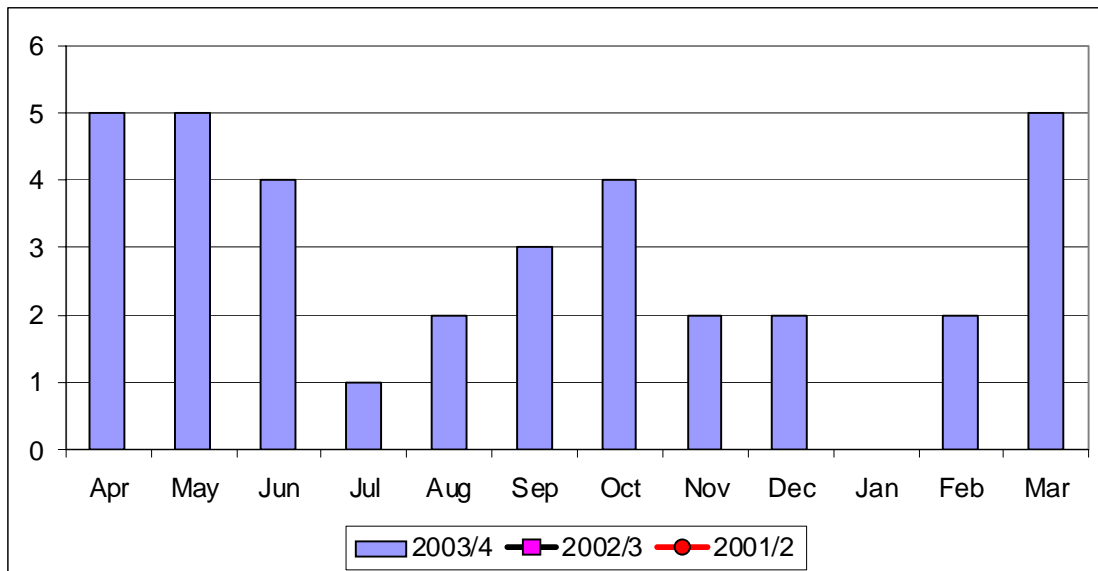
Criminal Damage by Months April 2001 to March 2003



Shoplifting by Months April 2001 to March 2003



Arson by Months April 2001 to March 2003



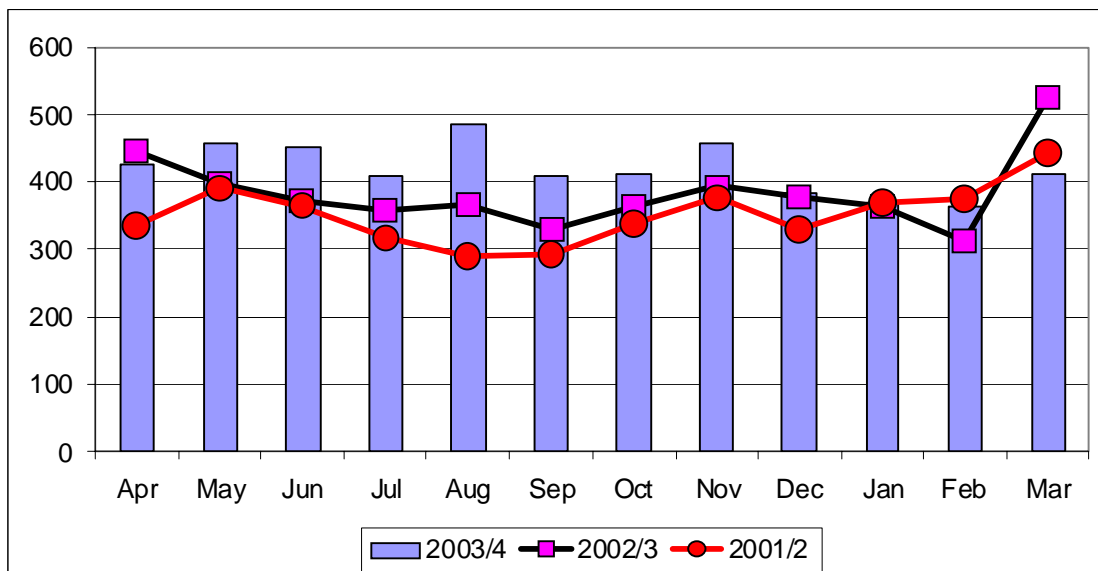
Total Crime

Totals

2001 – 2002 = 4229

2002 – 2003 = 4608

2003 – 2004 = 5038



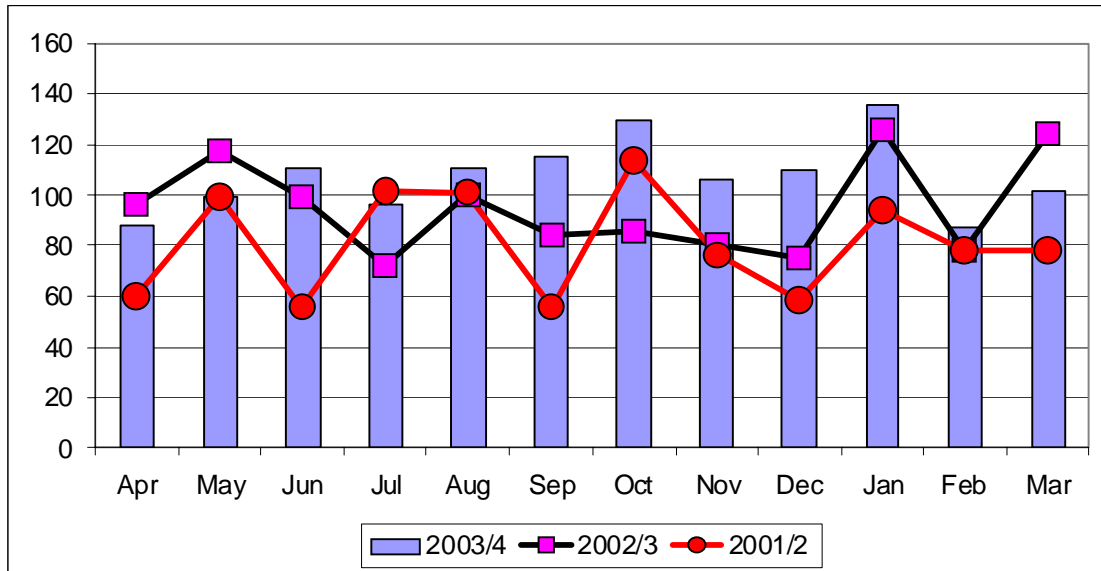
Total Crime

Detections

2001 – 2002 = 972

2002 – 2003 = 1137

2003 – 2004 = 1290



British Crime Survey 2003/2004

"Crime in England and Wales" uses the British Crime Survey (BCS) and the number of crimes recorded by the police to provide a comprehensive account of the latest patterns and trends in high volume crimes.

The number of crimes recorded by the police for 2002/03 will be slightly inflated due to changes in the way that the police record crime. The National Crime Recording Standard (NCRS) has been introduced to ensure that there is consistency between forces as to what crimes are recorded. Where possible, results have been adjusted accordingly.

The BCS questions a sample of the population. The sample size for this survey is bigger than ever before, however it is important to remember that because it is based on a sample, the figures may contain some level of inconsistency

Recorded offences by offence group by police force area and region, number per '000 population in 2003/04

Police force area and region	Police force Area	Total	Violence against the person	Sexual offences	Robbery	Total violent crime	Burglary	Theft and handling stolen goods	Fraud and forgery	Criminal damage	Drugs and other offences	Theft of and from vehicles
North East Region		111	16	1	1	18	16	39	4	29	5	15
North West Region		121	19	1	2	22	19	42	5	29	4	18
Yorkshire and the Humber Region		137	19	1	1	21	24	52	6	29	4	23
	Humberside	163	29	1	2	33	27	60	6	33	4	25
	North Yorkshire	95	13	1	1	14	15	39	4	20	3	13
	South Yorkshire	112	11	1	1	12	21	45	5	24	4	23
	West Yorkshire	156	22	1	2	25	29	57	8	33	4	27
East Midlands Region		117	18	1	2	20	19	45	6	23	4	18
West Midlands Region		113	20	1	2	24	17	40	7	22	5	17
Eastern Region		93	15	1	1	17	12	36	5	21	3	13
London Region		145	25	1	6	32	14	62	11	20	6	22
South East Region		91	14	1	1	16	11	36	5	20	3	13
South West Region		93	15	1	1	17	12	36	5	19	3	14
Wales		99	18	1	0	19	12	37	4	23	5	16
ENGLAND AND WALES		113	18	1	2	21	16	43	6	23	4	17

Recorded crime: annual detection rates by police force area and region, 2003/04

Region	Police Force Area	1998/99 ¹	1999/2000 ²	2000/01	2001/02	2002/03	2003/04
North East Region		29	29	29	22	30	28
North West Region		29	26	25	23	24	25
Yorkshire and the Humber Region		28	24	24	21	21	21
	Humberside	22	19	21	20	20	19
	North Yorkshire	33	31	30	26	26	28
	South Yorkshire	32	25	25	23	21	24
	West Yorkshire	27	25	23	19	20	20
East Midlands Region		31	27	25	18	23	23
West Midlands Region		31	26	27	27	28	28
Eastern Region		33	29	26	26	26	26
London Region		22	16	15	14	15	16
South East Region		30	27	25	26	26	24
South West Region		31	28	27	23	23	24
Wales		46	40	41	39	36	35
ENGLAND AND WALES		29	25	24	22	24	23

1. Percentage detected using the expanded coverage and revised counting rules which came into effect on 1 April 1998.

2. 2. Revised detections guidance was implemented on 1 April 1999.

Recorded crime: detection rates by offence group and police force area and region, 2003/04

Region	Police Force Area	Total	Violence against the person	Sexual offences	Robbery	Burglary	Theft and handling stolen goods	Fraud and forgery	Criminal damage	Drug offences	Other offences
North East Region		28	59	52	22	13	21	46	14	98	82
North West Region		25	59	44	20	12	17	28	13	95	72
Yorkshire and the Humber Region		21	49	39	26	11	16	26	11	94	72
	Humberside	19	38	30	17	10	15	23	11	90	55
	North Yorkshire	28	67	51	32	13	19	46	15	100	89
	South Yorkshire	24	64	50	31	13	19	37	12	94	90
	West Yorkshire	20	47	37	28	10	14	19	10	94	65
East Midlands Region		23	50	41	19	11	16	25	13	93	70
West Midlands Region		28	59	40	23	14	19	27	14	92	70
Eastern Region		26	62	37	23	14	17	27	15	94	68
London Region		16	26	34	12	12	8	13	9	87	49
South East Region		24	54	38	24	13	16	30	14	95	64
South West Region		24	45	32	19	14	16	37	14	95	60
Wales		35	72	53	37	20	23	45	19	95	86
ENGLAND AND WALES		23	50	39	18	13	15	26	13	93	67

Audit Findings

Crime Trends

Violence

The Home Office measures police performance at three levels – force, BCU and council district level. Hambleton’s crime performance is measured against a family of similar councils across the country. This similarity is based on a number of socio-economic factors such as populations, housing stock, unemployment statistics etc. Hambleton currently has one of the lowest violent counts per 1000 population in this group therefore the trends identified above are being replicated throughout the country and although Hambleton has seen a significant increase in the number of reports this is far lower than in similar districts.

In Hambleton the average increase in recorded violence offences over a three year period was 39.6% per annum equalling 119% cumulatively.

At present the violent crime detection rate is 76%. This figure reflects the fact that Hambleton has a stable largely residential population. More often than not victims know who have committed the offence. Stranger assaults are not common in Hambleton unlike the tourist areas in places such as Scarborough, Whitby and Filey

The data specifies that weekends and evenings as being the most likely time for violent offences to occur. This mirrors the general population social time. The 17 –30 year age range are most likely to be victims. This generally corresponds to their lifestyles - social activities, types of venues visited (pubs, clubs), locations frequented and events.

Burglary Dwelling

The number of dwelling burglaries during the last three years has remained fairly static at between 330 and 356 per financial year. This roughly equates to one house burglary per day, or 1 burglary for every 98 dwellings throughout

the district. In the six months since April 2004, dwelling burglaries have nearly halved (205 to 103) when compared to 2003 figures. If this success is maintained for the remainder of this financial year, the prospect of becoming a burglary victim would reduce to 1 in every 142 dwellings.

As several major 'A' roads service Hambleton, vehicle access both in and out of the district is relatively quick and easy. As Cleveland borders to the north and York and West Yorkshire to the south, the district does suffer from travelling criminals to a greater extent than some other districts in North Yorkshire e.g. Scarborough – limited road access .

Improvements made to vehicle security in recent years has forced some auto-crime criminals to burgle houses in order to steal car keys, as in some cases this is the only way that car thieves can bypass vehicle immobilisers. This has the knock on effect of raising the figures for house burglaries . Surprisingly, in **% of cases owners have simply left their premises insecure.

Theft of Vehicle

Thefts of motor vehicles have shown a steady 'year on year' increase for the past three years from 159 offences in 2001/02 to 235 in 2003/04. This is an increase of nearly 32%. This equates to the theft of approximately 4.5 vehicles per week. In the first six month of the current financial year (Apr-Sept 2004) there has been a 5% reduction in the number stolen motor vehicles across the district.

Very few vehicles are stolen from town centre car parks. Over 62% are stolen from rural areas with vehicles being stolen from outside owners houses (drives / adjacent on street parking) being the next highest category. Records show that very few vehicles are stolen from within locked garages.

Vehicles manufactured by Ford and Vauxhall are the most popular makes of vehicle stolen. This is merely a reflection of vehicle sales rather than any weakness in any particular manufacturer's security systems. A large proportion of the vehicles stolen were manufactured before 1994 when vehicle security / safety systems didn't feature as high on customer requirement lists. A wide range of vehicle types have been targeted from cars to vans, motorcycles, quad bikes and even tractors. Vehicles 'not stolen to order' tend to be recovered fairly swiftly after the theft is reported and a significant proportion of these are found abandoned or burnt out in Cleveland.

Theft from Motor Vehicles

There were 445 thefts from vehicles in 2001/02. This fell by 9% to 403 in 2002/03 before rising again 15% in 2003/04 to 466. This equates to approximately 9 thefts per week, which may relate to the incarceration of a known prolific offender. In the six months since April 2004, thefts from motor vehicles have fallen by over half (294 to 140) when compared to 2003 figures. The data suggests that the time when vehicles are most vulnerable from attack is during late afternoon and throughout the evening.

Hambleton attracts huge numbers of visitors to its stunning countryside

locations. Unfortunately most of the most popular sites are away from main roads where vehicles are left unattended for long periods of time in places with little or no passing foot traffic. These areas are easy targets for car thieves who can go about their business undetected.

In 2004 the Hambleton Community Safety Partnership specifically targeted this type of crime at the most vulnerable locations. A series of auto-crime road shows were held at 'hotspots', new more environmentally friendly warning notices were erected and both the police and partner agencies - North Yorkshire Moor's Rangers, National Trust Wardens, Yorkshire Water Officers and landowners have stepped up patrols.

Expansion of Neighbourhood Watch Schemes

The Partnership has seen a growth in all the different watch schemes across the District. A total of 42 Watch Schemes have been developed since April 2004. The intention is to continue increasing these schemes to support community cohesion and intelligence gathering and thereby reduce the fear of crime and crime itself.

Arson

Incidents of arson are relatively rare in Hambleton as can be seen by the figures for the past three years; 36 – 2001/02, 38 – 2002/03 and 35 – 2003/04. On average, this equates to less than one offence per week. No particular trends or patterns can be established from the data and there is no significant increase in this type of crime during October / November "Halloween, Mischief Night and Bonfire Night" period as would be expected with the sale and availability of fireworks.

The offence of arson is to intentionally damage or destroy property belonging to another by means of fire. A vast array of different types of property was destroyed during the past year in some quite unique circumstances however the most common types were;

- Vehicles
- Hay fires
- Skips & Bins
- Outbuildings (sheds, chalets, portacabins)

Vehicle fires fall into two categories. Firstly those whereby an offender steals a vehicle to travel from A to B after which they dump it and set fire to it in an attempt to mask the vehicles identity and any forensic evidence, and secondly there are those which are deliberately set on fire to avoid 'end of life' salvage yard costs or for insurance claims purposes. Now that the market price for scrap metal has increased significantly we are beginning to see a reduction in the number of vehicle dumped to avoid paying salvage charges. North Yorkshire Fire & Rescue Service has a dedicated 'Arson Task Force'. One of their roles is to educate the community about the affects of arson on both victims and the environment.

Offender profile

Probation data shows that the main offending age group is 17 to 21 years old and male. The most common offence for their clients is shoplifting. The most common sentence passed to probation clients is a Community Rehabilitation Order.

- The majority of YOT clients in 2003 were in the age 15-17.
- The main court order received by young people in 2003 was the Referral Order

This new order came on stream in April 2002 and is now the only disposal available to the court for a first offence to which a young person pleads guilty (excepting for an offence serious enough to warrant custody). This now accounts for over 40% of all court disposals and many of the young people now sentenced in this way would previously have received fines or conditional discharges

- The second most common order was the reparation programme where young people carry out programmes which enable them to give something back to the person or community which they offended against
- The data shows a marked reduction in the use of custody between 2002 and 2003 and this could be attributed to the recognition, by magistrates, of the Intensive Supervision and Surveillance Programme as a realistic alternative to custody. The scheme launched in December 2001 and therefore was not established enough by 2002 to show a reduction in the use of custodial sentences
- In terms of the offences committed in 2003 by Young people the most common were thefts and motoring offences. Vehicle theft and unauthorised taking and Assaults were the next most prevalent.

It is important to note that over 60% of young people known to the Youth Offending Team are currently not engaged in education, training or employment and 90% are not involved in any positive leisure activities. The Youth Offending Team intends to continue to work on improving young people's access to education, training and employment and to encourage positive use of leisure time.

Domestic Violence

Between April 2003 and April 2004 there were 331 reports of **domestic violence** in the Hambleton area. Most of the victims (84%) were women, 12% were male victims with female offenders.

The highest rates of incidents by area were:

- Northallerton East 21%
- Thirsk and Sowerby 14%
- Brompton, Northallerton 8%

The figures show an increase in incidents in the summer months and around the Christmas period.

Measuring the prevalence and incidence of any offence where there is a personal relationship between victim and offender is extremely difficult. Domestic violence is under recorded in all agency statistics such as Police, Housing and Health and the recorded figures are only the tip of the iceberg.

A true and accurate assessment of the real levels of domestic violence across the Borough will not be possible until there is progress in changing attitudes so that all victims of domestic violence feel safe in revealing the violence they are experiencing or have experienced.

Given the volume, the level of repeat victimisation, and the impact on victims and their children, this area of work requires local focus and a multi-agency approach during the period of the next strategy.

Hard To Reach Communities

Hambleton Community Safety Partnership and Richmondshire Community Partnership commissioned a Community Safety Audit with the Local Lesbian Gay Bisexual & Transgendered Community 'Out for the Count'.

A summary of the contents reveals:

Over the last six years the Gay Mens Sexual Health Project, Yorkshire MESMAC has been active in community development via Outreach, promotion of county wide consultation and group work. There have been little other development by other agencies with a remit to identify and meet the needs of the Local Gay Bisexual & Transgendered population.

The result of this is that there has been well-established lobbying work with North Yorkshire Police and other agencies, mainly at County level. There has also been development of a Gay Mens social and support group which became in 1999 Hambleton & Richmond Gay Men Talking. This enabled local contacts to be made with both District Councils, North Yorkshire County Council, the Police, National Health Service and other agencies such as Citizens Advice Bureau.

However concerns were expressed and a number of issues, for example:

Assaults

The actual concern about assaults and the actual number of reported assaults indicates a trend toward one of two things. Either, an underreporting of assaults or an undue fear of assault.

The 'fear of crime' particularly in a low crime area such as rural North Yorkshire does have to be taken into consideration.

Name Calling

Anecdotal evidence once again indicates that few of the gay community perceive this as being understood as a criminal offence by the Criminal Justice system. This needs to be emphasised in any publicity material in the future.

Damage to Car/Property

The psychological effect of this is clearly understood by the Local Gay Bisexual & Transgendered Community and reassurance that criminal damage by 'targeting' is understood by Police Officers.

Intimidation

This is a low area of priority in terms of initial response, it is however, likely that the issue of Hate Crime and Court proceedings would raise concerns about witness intimidation at a later stage. Further work is needed to establish CPS and Victim Support developments.

Graffiti

No examples given of high –visibility graffiti, but many examples of smaller one-off incidents, almost entirely perpetrated by young people

Threat of Being 'Outed'

The threat of being "outed" was a 'much talked-about' issue for older men and women. Many have what appears to be an irrational fear of the damage they perceive that this would cause: however the fundamental right to privacy is in question.

Conclusions

The absence of a publicised Hate Crime initiative needs to be addressed, given the impact of:

- Overall increase in violent crime in the UK and North Yorkshire

- The higher visibility being experienced by local LGBTs as a result of cultural changes
- The impact of fundamentalist religious and other groups
- Likely changes within the criminal justice system which may enable more witnesses to 'come forward' without being in open court
- The True Vision methodology being promoted as a National standard by many Police Forces in the UK

Anti-social behaviour

Establishing base lines for the measurement of anti-social behaviour remains difficult as it relies on a number of agencies developing systems of recording that capture the full range of activities 'likely to cause harassment, alarm or distress to one or more persons not of the same household', and do not include duplication. While endorsing the definition within the act this audit also has a working definition of anti social behaviour that we request individuals to ask themselves, that it being:

"If after, in my opinion, I have acted in a balanced and mature way in analysing what is anti social behaviour and the behaviour of another or others still offends me, then it is anti social".

Anti-social behaviour does not have to be criminal. It can include criminal, racist or homophobic acts. The use of Anti-Social Behaviour Orders is part of the problem solving approach adopted by the Community Safety Partnership along with the "Youth Action Combating Anti-Social Behaviour Scheme" which was implemented in April 2002 and is a partnership approach to the issue of youth disorder, combining diversion, interventions and enforcement resolutions as appropriate.

The Persistent and Prolific Offender Scheme presents an opportunity of agencies sharing information and ensuring appropriate individual preventative action is taken.

Criminal damage/vandalism

Incidents of criminal damage have remained relatively static for the last three years as this category accounted for just over 21% of all reported crime in 2001/02 compared to 20% in 2003/04. There are four distinct sub-groups within this category:-

- Damage to dwellings
- Damage to other buildings (commercial premises, sheds, farm buildings etc.
- Damage to vehicles
- Other category (not included in any of the above)

Damage to vehicles and other buildings are the highest recorded offences representing 7% and 5.1% of total recorded crime. This made them Hambleton's 4th and 6th most reported offences in 2003/04.

The weekend between Friday and Sunday is when most incidents occur and most acts of criminal damage occur between about teatime and the early hours of the morning. There is a surge of offences reported to the police around the Halloween, Mischief Night and Bonfire Night periods and broken glass in buildings or cars is the most common form of damage.

The busiest months for criminal damage are October/November, followed by January and April. The busiest days are Fridays, Saturdays and Sundays, with the bulk of offences occurring between 5pm and 1am. The most common is damage to vehicles, closely followed by damage to dwellings and damage to other buildings.

2003/04 is the first period over which criminal damage has been recorded in any depth; there is therefore no comparative data for this audit.

Fire & Rescue

Fire and Rescue Service personnel have targeted a number of issues in the Hambleton District Council area over the past three years and in conjunction with colleagues in the Hambleton Community Safety Partnership have made some significant achievements.

- Fire officers and crews are regular visitors to primary and secondary schools delivering a range of educational safety messages.
- The Fire and Rescue Authority's integrated risk management plan continues to identify and evaluate the areas of highest risk and proposes effective action to reduce risk to tolerable levels.
- The Fire and Rescue Service is contributing to the development of an integrated Road Safety Strategy for the community.
- The Fire and Rescue Service is exploring ways in which it can support and help to develop effective programmes to encourage positive activities for young people.
- Primary fires are of a more serious nature, e.g. house fires. Secondary fires are of a less serious nature, e.g. grass fires.

Parish Council surveys

Taking vandalism, particularly graffiti, as a form of anti-social behaviour, this issue was by far the most prominent concern and must emerge as a major theme from this audit. Some anti-social behaviour was identified as alcohol fuelled.

Reported problems Included:

- Vandalism
- Police Presence/ Nuisance
- Drink related nuisance
- Nuisance Youths
- Speeding Traffic
- Dumping Cars

Respondents made a strong bid for greater use of all Anti-social Behaviour legislation/initiatives and for full use of police powers.

Comment was also made regarding public faith in the police and other agencies being lost and the need for all involved to listen to communities and take action on issues raised.

Initiatives to increase social and parental responsibility were themes in the response to what should be done over the next three years, as were improved facilities for young people including transport to enable them to access amenities

It is clear that further work is needed to inform, motivate and support parish councils to maximise their functions under Section 17, Crime and Disorder Act 1998.

Residents survey

In order to produce 1000 random samples the address Point database for Hambleton 2001 was used. Each record was assigned a number and then the random sampling technique within Microsoft Excel was used in order to gain 100 records. This is the equivalent of taking 1 in every 34 properties in Hambleton. In order to gain the Broadacres Housing Association Sample the same technique was used but in this case 1 in every 20 properties was taken

- The majority of respondents had lived in their present address for more than 5 years and nearly half thought there was a sense of community.
- In the majority of cases residents felt safe both at night and during the dark, but some people took precautions against crime when out after dark.
- The emerging trends from the survey show that the majority of people were not worried about being a victim of crime, although those who were feared burglaries, car crimes or being mugged or robbed.
- Key themes emerging from disorder centre on Anti-Social Behaviour, boredom in teenagers, burglaries and certain types of auto offences.
- Some respondents believed alcohol consumption was a factor in the above, as was illegal drug use, although many had never witnessed the latter.

Business Crime Consultation

This information and data has been gathered as part of a mapping exercise which took place in Yorkshire and the Humber between January and March 2004. The figures often collected at a national or regional level and are not disaggregated to a sub-regional or local level. However the figures are indicative of what may exist within CDRP areas, it must be remembered that Hambleton is a rural area and is not subject to the same volume of incidents as those within the urban areas.

Key Findings

- Regional Business Crime Advisors estimate that 25% of Volume Crime is committed on Business Premises
- The main types of Crime experienced by Businesses are against property
 - Burglary
 - Theft
 - Damage to Vehicles
 - Vandalism
- Levels of Victimization are particularly high in Yorkshire and the Humber
- About 70% of victimised companies are repeat victims and can expect to experience 5 victimisations on average
- 25% of companies in retailing are victim of four or more different types of crime

- 25% of companies in manufacturing experience at least two types of crime
- 75% of all retailers are the victims of at least one crime
- Crime against business is highest amongst those located in retail parks and enclosed shopping areas
- 90% of hotel and catering establishments report having been the victim of crime
- All sectors of business are vulnerable to victimisation – location is the key determinant, with particularly vulnerable areas in town centres, deprived and high crime neighbourhoods, industrial estates and business parks.

Hambleton Business Survey

Key Findings

In order to produce 500 random samples the address Point database for Hambleton 2001 was used. Each record was assigned a number and then the random sampling technique within Microsoft Excel was used in order to gain 500 records. Certain businesses were then targeted to add to questionnaire findings. Analysis work is still ongoing to determine key themes; so far emerging themes are as follows:

- Increase in burglary and thefts
- Trespassing
- Business rates too high for start up
- Town Centre Parking
- Countryside mobility has changed meaning more new faces
- Poor Lighting
- Drunks and Gangs of Youths
- Isolated Area
- Burglary
- Theft (Tools, Machinery, Gates)
- Theft (Livestock, Poaching)
- Shop Theft
- Increase police in rural areas (Beat)
- Prosecution Increases
- CCTV
- Corporal Punishment
- Visibility

Drugs Audit

Introduction

The Police Reform Act 2002 updated the Crime and Disorder Act 1998. There is now a statutory obligation for all crime and disorder reduction partnerships to undertake and carry out a Drugs Audit for the first time alongside the 3-year Crime and Disorder Audit.

Context

Data from North Yorkshire Police and other agencies has been gathered and presented in this document.

The government's ten year strategy "Tackling Drugs to Build a Better Britain" was implemented with the vision "to create a healthy and confident society, increasingly free from the harm caused by the misuse of drugs". The strategy was updated in 2002 and places a greater focus on Class A drugs, education, prevention and treatment. There are 4 main strands to the strategy:

- Reducing supply – reducing the prevalence of illegal drugs on the streets.
- Treatment – reducing the number of those with existing drug problems through effective treatment of harm minimisation
- Young people – preventing young people from using drugs and developing drug problems
- Community – reducing the impact of drugs on communities and to engage them in helping to tackle drugs

Review of policy and practice

The current Hambleton Crime and Disorder Reduction Partnership Drugs Strategy and Action Plan is aligned with the North Yorkshire Drug Action Team Strategy, National Drugs Strategy, The Home Office Strategic Plan and the National Drug Strategy Performance Management Framework.

The main objectives are:

- To identify the full extent of drug and alcohol use and abuse within our communities.
- To continue and carry out further research on the prevalence and incidents of drug and alcohol problems.
- To contain the availability of controlled drugs through enforcement action.
- To improve access to and availability of counselling, support, treatment and rehabilitation services for people who misuse drugs and alcohol.

- To reduce the misuse of alcohol by teenagers and young adults in particular.
- To reduce the costs of health and other services through alcohol related disorder incidents.
- Continue district wide drug and alcohol awareness campaigns.

Crime and Crime Trend Analysis

A North Yorkshire partnership approach was implemented for the collection of data and crime trend analysis, the eight Crime and Disorder Reduction Partnerships in North Yorkshire jointly funded a Drugs Analyst post, which was managed by North Yorkshire Police. The aim was to provide each Crime and Disorder Reduction Partnership with quarterly reports on drug offences.

The reports by the Drugs Analyst cover the period April 2002 to December 2003 and provide information on the number and type of offences, offenders and the Arrest Referral Scheme.

Police recorded drug offences

During the period April 2002 until March 2003 there were 133 drug offences in Hambleton district, and an estimated 173 offences between April 2003 and March 2004. In Hambleton, the above figures give an incidence rate of 1.8 per thousand population i.e. just over half of the North Yorkshire average.

In England and Wales there were 141,060 drug related offences in 2003/04. In terms of per 1000 population this is 4 with a 93% detection rate. North Yorkshire it is 3 per 1000 with a 100% detection rate (2,436 offences).

By far, the majority of drug offences in Hambleton were possession of drugs. In both 2002-2003, and 2003-2004, there were only six offences relating to the supply of drugs each year, ie 4% of total offences. Possession of Class A drugs amounted to 17% of offences. Over the two years, there was only one offence of supply of a class A drug. There were 3 offences of the production of cannabis.

30% of all drug offences were detected as a result of stop/searches. 29% of arrests were as a result of others calling the Police to attend, and one-fifth of arrests were not primarily for drugs, but were subsequently were arrested for drug offences. The most common offences committed where drugs were uncovered were for disorder, assault and sexual offences. Most offences were detected in Northallerton.

Recorded drug and drug related offending (young people)

Over April 2002 to March 2004, there were 37 young people who committed drug offences between 10 and 16 years of age.

- There is no data directly linked to drugs by the YOT. However, there is YOT data included in the main audit.

Supply of drugs and drug seizures

In April 2002 to March 2003, the value of drug seizures was £2,249. The estimated value of Police drug seizures for 2003-2004 is £2,998.

Drug crime and disorder reported to other agencies

The National Probation Service wrote 109 pre sentence reports for adult individuals in Hambleton district and 67 individuals received community disposals between April 2003 and March 2004. The three top criminogenic factors relating to the offenders were thinking skills, emotional well being and education. Drugs was not a significant issue for this group, alcohol was identified as a more significant issue.

There is currently no data available on prison releasees i.e. on licence and supervised by the Probation Service or offenders released from prison having served a sentence of under 12 months.

There are presently no Anti-Social Behaviour Orders or Acceptable Behaviour Contracts in place within Hambleton linked to drugs. There has been one eviction from a Social Landlord's property linked to the supply of drugs.

Baseline drug litter information is currently being collected by Hambleton District Council Environmental Health Department.

Drug misuse amongst key vulnerable groups

Groups of young people potentially at greater risk of developing substance misuse include young people who are permanently excluded from school, young people in residential care for long periods of time and young people whose parents are substance misusers.

We do not currently have data on any of the above groups relating to substance misuse and drugs, baseline information will be gathered from April 2005.

The main points from Hambleton and Richmondshire focus group were:

- The current needle exchange facility does not provide a private space for methadone consumption and harm minimisation advice
- There is no outreach needle exchange service
- Needle exchanges in Hambleton are down from 70% to 50%
- Service users felt severely discriminated against by housing agencies
- Service users felt 'police had little regard for their human rights' regarding stop and search procedures

- Other areas of concern include difficulties with transport, lack of suitable employment, lack of activities, lack of suitable training, discrimination in local pubs

General picture of assistance to drug and alcohol users in Hambleton District

Northallerton Drug & Alcohol Services had 82 clients from Hambleton district obtaining tier 2 and 3 services. The greater proportion of these, 48% were between 26 and 45 years of age, and the largest group accessing services, 23%, were aged 21-25. Only 1% were less than 15 years old. The primary substance being treated was alcohol in 66% of cases, and about 20% had heroin as the primary substance. 30% of clients were female and 66% male.

HARCAS (Hambleton and Richmond Community Addiction Service) had 64 clients from Hambleton district obtaining tier 3 and 4 services. The greater proportion of these, 48% were between 26 and 45 years of age, and the largest group accessing services, 22%, were aged 21-25. None were less than 15 years old. The primary substance being treated was alcohol in 77% of cases, and about 12% had heroin as the primary substance. 80% of clients were male and 20% female.

Town councils have provided data on nuisance and Anti-Social Behaviour but none relates to drug related disorder.

A survey on unmet housing needs carried out by Supporting People within the Mental Health Team identified 20 homeless people in Hambleton (i.e. rough sleepers, no fixed abode and in danger of losing their homes). Four out of 20 ie 20% were identified as having substance misuse issues.

At the 2004 Hambleton & Richmondshire Drug and Alcohol Annual Conference a consultation questionnaire was completed by a number of service providers in connection with the problems associated with their client groups (i.e. problematic drug and alcohol users). A series of questions were asked and answered as to their perception of the problems which resulted in the following information:

- Which area of support is not being fully addressed? The top 3 areas identified were – housing, support for young people with drug dependent parents and education and awareness for young people. The majority of people agreed that a multi-agency approach was needed to address these issues.
- Which agency discriminates against problematic drug and alcohol users? The top 3 agencies identified were – Police, Public and Education establishments.

Offender and victim profiles

97% of drug offenders arrested in Hambleton were White European and 57% were unemployed. 33% were employed. 20% were at school, college or university.

41% of Class A drug misusers were unemployed, and 71% of heroin users, but this is from very small numbers.

There is no information relating to the victims of supply offences.