



SECTION 1

Introduction and Context for the Community Plan

1. What is Community Planning?

Community Planning is a process which involves the local community to identify the key economic, social and environmental issues which need to be addressed across the District – to decide the sort of community they want now and for future generations. The Strategic Partnership co-ordinates the actions of the public, private, voluntary and community sector groups and organisations that operate locally to match their actions to the needs, through a number of action plans which say who is going to do what and when.

It can be summarised as *'identifying needs of the community and working together to meet them'*.

The key components of this work are:

- **THE COMMUNITY PLAN**

– a document which pulls together the key issues identified by the local community, partners and available data to provide an overarching framework to improve the quality of life for people living and working in Hambleton. This includes a long term vision and details of how that can be delivered.

- **THE LOCAL STRATEGIC PARTNERSHIP**

– the organisations and groups in public, private, voluntary and community sectors who work together to address the issues raised in the Community Plan.

Community Planning work in Hambleton takes place at a number of levels. The Community Plan for Hambleton focuses on issues to be addressed at a District level. There are also important links to work taking place at a local level in the Area Group Action Plans and Parish Plans and to the North Yorkshire County level which are described in further detail below.

The Government has given Local Authorities a statutory duty to prepare a Community Plan and establish a Local Strategic Partnership. Within this is also a role to ensure that there are adequate monitoring systems in place to ensure the effectiveness of the Plan and the Partnership and ensure that there is regular feedback to the community. This is an example of Council's Community Leadership role.

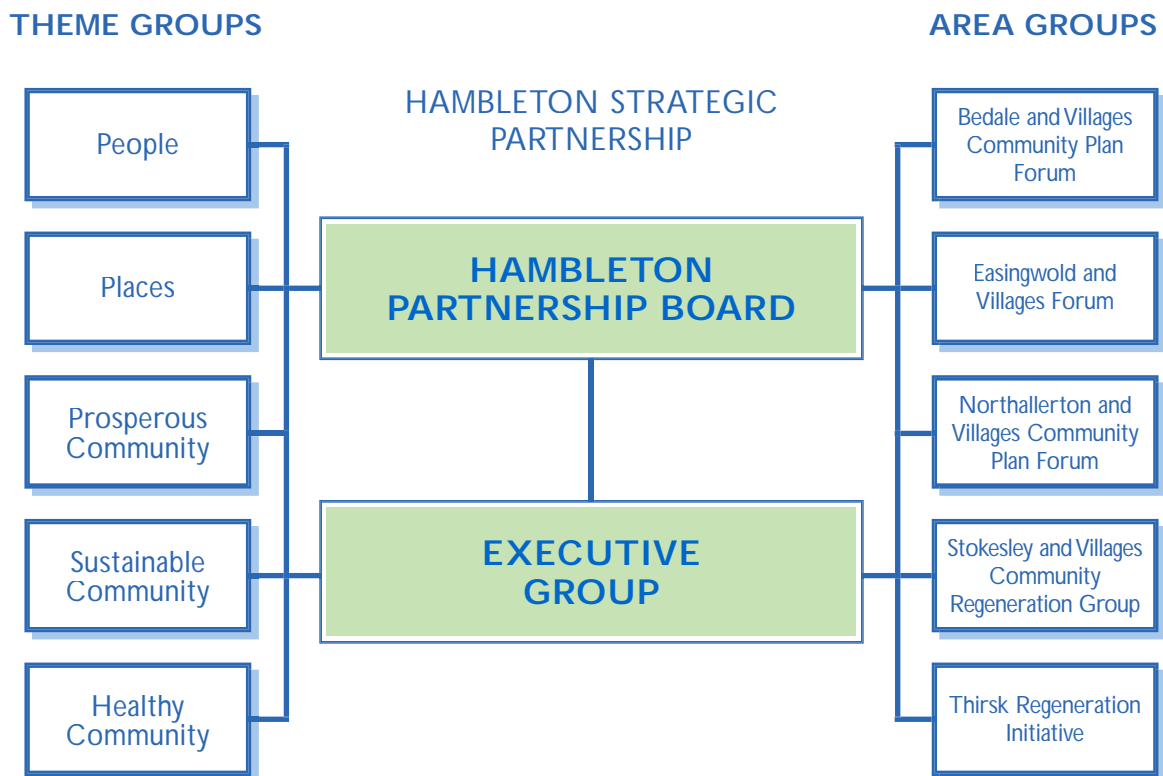
Hambleton District Council is therefore a lead partner in community planning work, but the Community Plan is not a Council Plan, it is a Plan which has been developed and owned by the Hambleton Strategic Partnership as a whole.



2. Who is the Hambleton Strategic Partnership?

The Hambleton Strategic Partnership brings together a wide range of groups and organisations that operate across the District, covering the public, private, voluntary and community sectors. Each of these partners has a key role to play in developing and delivering the Community Plan, together with a responsibility to work collaboratively as part of a partnership. It is recognised that many issues can be tackled more effectively by working together in partnership, than by individual organisations acting alone.

The Partnership operates at 4 levels as illustrated below:



PARTNERSHIP BOARD

Acts as the strategic decision making body to ensure that the Community Plan is delivered and that each partner makes an effective contribution.

EXECUTIVE GROUP

Co-ordinates the work of the Theme and Area Groups, to ensure there is effective communication and co-ordination between the ten Groups, particularly in relation to cross cutting issues.

THEME GROUPS

Five Groups that bring together the relevant organisations to develop and implement action plans under each of the five Community Plan themes: People, Places, Prosperity, Safe and Healthy. They are independently chaired by a lead organisation appropriate to that particular theme. The Safe Group is part of the established Hambleton Community Safety Partnership.





AREA GROUPS

Five Groups based around the five market towns and their surrounding rural hinterland. They are local community partnerships involving residents and a range of locally based groups and organisations including Parish and Town Councils, District Council Ward Members, local business, Chambers of Trade, Community Care Associations and Schools. Their role is to develop and implement local action plans for their area and provide local community input into the Strategic Partnership.

All elements of the Partnership directly involve a wide range of the groups and organisations that operate across Hambleton. There are many more who may be involved indirectly through groups and organisations that represent wider networks. This is particularly the case for the voluntary sector. The Partnership is keen to ensure that everyone who wants to be involved can be, and in a way which is meaningful. However, membership requires a full commitment to the Partnership and Community Planning process.

Further details on the membership of each level of the Partnership can be found at:
www.communityhambleton.org

3. What does the Community of Hambleton look like?

A Snapshot of Hambleton District – Hambleton's Community

The Community Plan aims to improve quality of life for the community of Hambleton. The key to interpreting what this means and how this can be achieved is a full understanding of our community and the area in which we are working.

Hambleton is a large rural District with a dispersed settlement pattern comprising 5 market towns, which are home to just less than half of the total population and 130 villages many of which are small in size and of a high environmental quality.

When compared to the national average Hambleton has fewer numbers of young people and black and ethnic minority groups and higher numbers of older people living in the District.

In socio-economic terms unemployment is low and there is good access to the District, as a whole along trunk roads and by rail on the East Coast mainline.

According to the Index of Multiple Deprivation, the District is ranked as being one of the least deprived nationally. The District is also one of the safest places to live with low levels of crime.

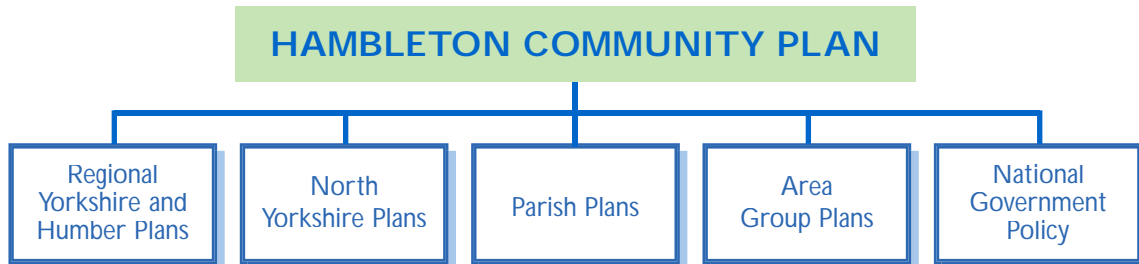
This all sounds very positive. However, as with any area it is important to recognise that this also provides a number of challenges to be addressed. These are outlined in detail in *Section 2*.



4. How does the Community Plan fit with other Plans?

Action at the Right Level

The Community Plan is a document which looks at District wide issues. It is important to understand how this relates to what is happening at the levels both above and below the District level. These key influences and linkages are summarised below:



Starting at the Local Level

Parish Plans

At a Parish level a number of Parishes have developed and published a Parish Plan, which identifies needs at a very local level. There are currently 12 completed Parish Plans across the District, with a further 6 in progress and 6 expressing an interest (as at June 2006). This is out of a possible 119 parishes. Following an analysis of the results of community consultation an action plan of projects is developed by the local Parish Plan Group. A number of these can be taken forward by the community themselves. However in relation to certain issues it may be necessary to feed them in to the Area Group Plan or District Community Plan, which will give further support.

Area Group Community Plans

The Area Groups of the Hambleton Strategic Partnership, formally known as the Community Investment Prospectus (CIP) Groups have also developed detailed Community Plans for the market towns and surrounding rural areas. In Northallerton and Bedale these have been supplemented by Renaissance Market Towns (RMT) Delivery Plans. In Thirsk they have built upon the Market Towns Initiative Programme. The Area Groups are actively implementing projects identified in their Plans.

Local level input is an essential part of the community planning process, which seeks to address the issues that local communities believe are important. Parish Plan and Area Community Plan Groups provide an excellent opportunity for residents to become involved in improving quality of life and influencing the future delivery of services in their local area. In part they are the local building blocks for the Community Plan. Further details of existing Groups can be found at www.communityhambleton.org including how people can get involved. Community Planning is an on-going long term process – it is never too late to get involved.



LINK WITH THE COMMUNITY PLAN

Where there are issues which need to be addressed at a strategic level, for example provision of affordable housing, these are fed into the Community Plan, to influence the current and future activity of service providers such as the Police, Primary Care Trust, Housing Associations, District and County Council.





Hambleton District Level

There are numerous Plans and Strategies which are developed at a District level which should take their lead from the Community Plan. There are too many to list but include the District Council's Corporate Plan, Housing Strategy, Cultural Strategy, Tourism Strategy, Health Improvement Plan and Community Safety Strategy and address specific issues in more detail. It is essential that as they are reviewed and updated they reflect the priorities identified in the Community Plan.

Hambleton Local Development Framework

A key strategy at a District level is the Local Development Framework (LDF) 2021. This will replace the District Wide Local Plan in determining the level, location and nature of future development in Hambleton and is due to be completed in 2007. The vision of the LDF has been aligned with the Community Plan vision and the aims and objectives of the Community Plan have helped to inform the development of the Core Strategy and Development Policies of the new Framework. It is intended that the LDF becomes a spatial representation of the Community Plan. Further details of the LDF can be found at www.hambleton.gov.uk

Hambleton District Council Corporate Plan

The Council has reviewed its own vision and priorities to ensure that these are aligned with the Community Plan. It is therefore possible to see the Council's contribution to the delivery of Community Plan vision and themes.



LINK WITH THE COMMUNITY PLAN

The Community Plan acts as a blueprint for other District Wide Strategies and Plans which address a wide range of local quality of life issues. It is important that other strategies are working in the same overall direction. For example, the Local Development Framework can support the delivery of a number of actions in the Community Plan and Area Group Plans which are 'spatial' in that they are concerned with spaces and places, such as allocating land for community facilities.

North Yorkshire Level

North Yorkshire Community Strategy

The North Yorkshire Strategic Partnership (NYSP) has produced a Community Strategy 'North Yorkshire Together – A Strategy for Local Communities 2005-08'. Within the Strategy are 7 key themes around economy, local communities, social inclusion, safety, sustainability, environment and landscape, access to jobs and services and dealing with emergencies. Further details on this can be found at www.northyorks.gov.uk



Local Area Agreements

In addition the NYSP are currently leading the development of a Local Area Agreement for North Yorkshire. Local Area Agreements are agreements between Local Authorities and their delivery partners, brought together in the Local Strategic Partnership, and central government. They allow the pooling of existing funding streams to enable the delivery of locally identified priorities. They are being rolled out nationally and from 2007/08 there will be a Local Area Agreement for North Yorkshire. Further information on Local Area Agreements can be found at www.goyh.gov.uk and www.nysp.org.uk

There is a requirement from Government to develop the Local Area Agreement around 4 blocks which have a number of local identified outcomes. These are:

- *economy and enterprise*
- *children and young people*
- *health improvement and older people*
- *safer and stronger communities.*



The North Yorkshire Strategic Partnership has established 6 thematic partnerships to develop the Agreement which will be implemented in April 2007. These are listed below, together with the relevant Hambleton Strategic Partnership Theme Group.

North Yorkshire Thematic Partnership	Hambleton Strategic Partnership Theme Group
Economy and Enterprise	Prosperous
Children and Young People	People
Adults	People
Health Improvement	Healthy
Safer Communities	Safe
Stronger Communities	People/Places



LINK WITH THE COMMUNITY PLAN

The Hambleton Community Plan is an important source of local level information on issues and priorities which has been fed into the North Yorkshire Community Strategy. In addition the Hambleton Strategic Partnership has a role to influence the development and delivery of the Local Area Agreement to ensure that local community priorities in Hambleton are considered when targets are set and future spending decisions are made.





Regional Level

Regional Economic Strategy

The Regional Economic Strategy (RES) is prepared by Yorkshire Forward and is concerned with the achievement of sustainable economic growth, by promoting business growth, learning, social inclusion and using the full potential of physical and cultural assets.

Sub-Regional Investment Planning (SRIP) was launched by Yorkshire Forward in 2003 as a mechanism to join up funding and strategy at a sub-regional level around a set of agreed priorities. The plans provide the mechanism by which the RES will be implemented within York and North Yorkshire. The Sub-regional Investment Plan is reviewed in the year following the review of the RES. This was last reviewed in 2005 as part of a three year cycle, leading to the review of Investment Plans in 2006. The reviewed SRIP will be for the 5 year period 2007/8 – 2012/13.

This review started with the preparation of a Strategic Economic Assessment (SEA) which provides the evidence for considering future priorities to be incorporated into the Investment Plan. These are then developed further by priority groups. Further details can be found at www.yorkshire-forward.com

Regional Spatial Strategy

The Regional Spatial Strategy sets out policies for future development at a regional level and is currently being developed by the Yorkshire and Humber Regional Assembly. It has four strategic themes:

- *economic regeneration and growth*
- *promoting social inclusion*
- *urban and rural renaissance*
- *conserving and enhancing natural resources.*

In rural Districts such as Hambleton it supports the development of market towns as the main focus for local services, housing and employment and small scale housing provision in larger villages where it contributes to meeting local need, such as affordable housing and supporting local services. Sites for new housing should not give rise to a need for long distance commuting.

The Regional Spatial Strategy divides the region into separate spatial policy areas. York and North Yorkshire is in a unique situation within the region in needing to respond to five sets of objectives. HDC is primarily in the Tees and Vales Links sub area of the Regional Spatial Strategy, although the southern part around Easingwold is in the York sub area. Further details of the priorities outlined for each can be found at www.yhassembly.gov.uk



LINK WITH THE COMMUNITY PLAN

The Community Plan, Area Group and Renaissance Market Town Plans have a role to influence the delivery of regional strategies such as the SRIP in Hambleton and inform the review process which is currently taking place.



National Level

Many of the key policies outlined below are also linked to the development of the Local Area Agreement in terms of stronger and sustainable communities, children and young people, older people, health improvement and community safety.

Local Government Act

The Local Government Act 2000 placed a duty on local authorities to prepare a Community Plan. It also introduced the power to promote economic, social and environmental well-being. The Government sees Local Strategic Partnerships as one way of giving a bigger voice to local people. However it is also promoting this in other ways, for example through an enhanced role for Councillors as leaders and advocates for local communities, representing their interests in a range of forums and the Quality Parish Council Scheme.

Sustainable Communities: People, Places and Prosperity

In 2005 the Office of the Deputy Prime Minister (ODPM) published a five year plan for Sustainable Communities: People, Places and Prosperity. This encourages the development of Sustainable Community Strategies which will contribute to sustainable development and be a key contributor to the delivery of the Government's vision for sustainable communities. Sustainable Communities are defined as 'Places where people want to live and work, now and in the future'. They are:

- *active, inclusive and safe*
- *well run*
- *environmentally sensitive*
- *well designed and built*
- *well connectea*
- *thriving*
- *well served and are fair for everyone.*

A more detailed outline of this definition can be found at the Department for Communities and Local Government website www.communities.gov.uk

UK Sustainable Development Strategy: Securing the Future

Published in 2005, Securing the Future sets out the Government's four priorities for sustainable development and the actions required to achieve them. These are:

- *sustainable production and consumption*
- *climate change and energy*
- *natural resource protection and environmental enhancement*
- *creating sustainable communities and a fairer world*
- *helping people to make better choices to support the above.*

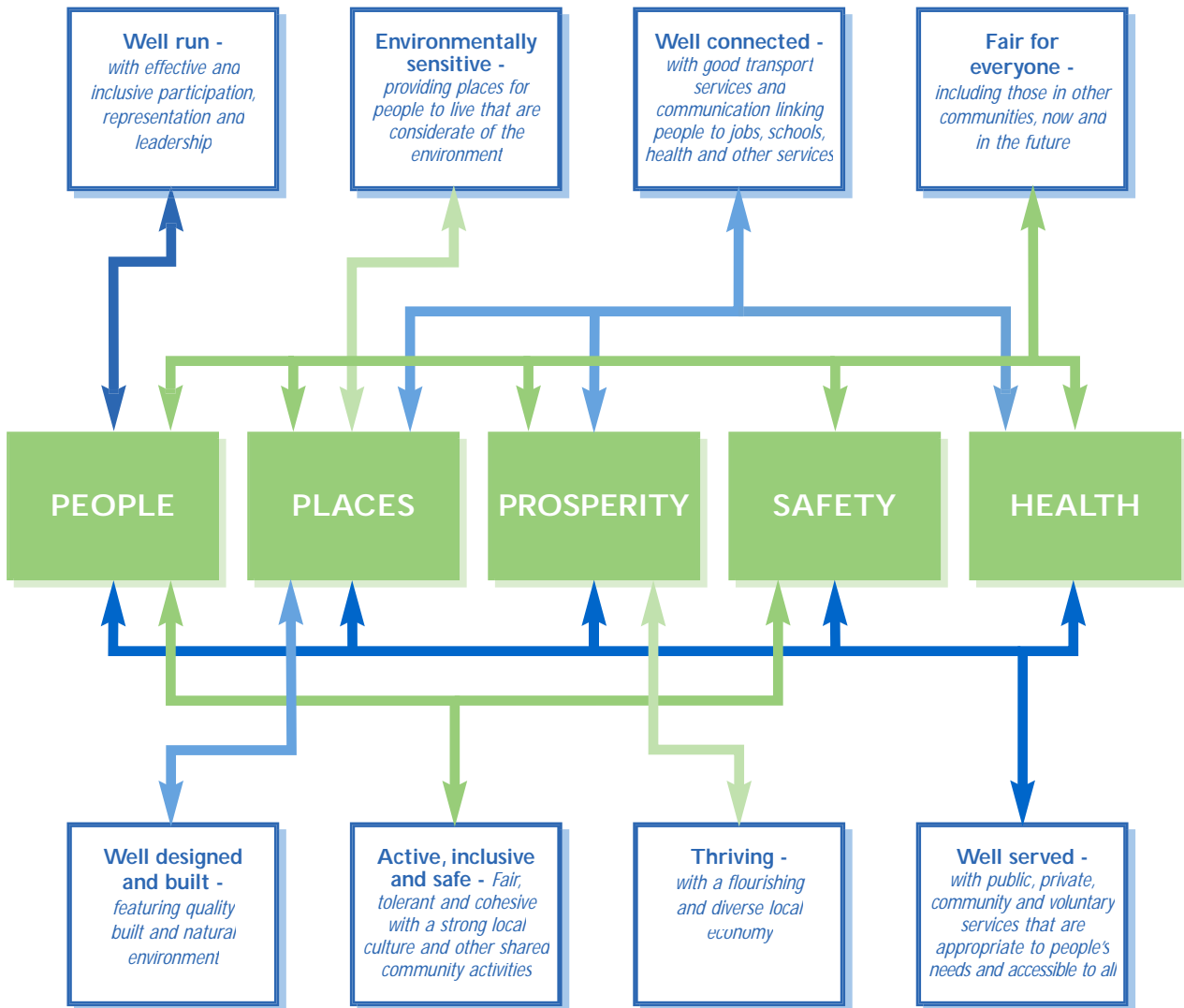
Further details can be found at www.sustainable-development.gov.uk





SUSTAINABLE COMMUNITIES STRATEGIC LINKS

The diagram below illustrates how the Community Plan will help deliver Sustainable Communities.



Key to framework above

Sustainable Communities Framework

Community Plan



Rural Proofing – Policy Makers Checklist

Published by the Countryside Agency following in the 2000 White Paper this checklist helps to ensure that the impacts on rural communities are considered and where appropriate alternative initiatives and solutions to need are developed in a response to this.

Further details can be found at www.countryside.gov.uk

Every Child Matters

This outlines the Government's aim for every child, whatever their background or circumstances, to have the support they need to:

- *be healthy*
- *stay safe*
- *enjoy and achieve through learning*
- *make a positive contribution to society*
- *achieve economic well-being.*

Further details can be found at www.everychildmatters.gov.uk



Our Health, Our Care, Our Say: A New Direction for Community Services

The Department of Health White Paper sets out a vision and structure for more partnership working between health and social care in the delivery of local services for adults. It sets out seven outcomes which support the well-being of older people and address the impact of an ageing population. These are:

- *improved health and emotional well-being*
- *improved quality of life*
- *making a positive contribution*
- *choice and control*
- *freedom from discrimination*
- *economic well-being*
- *personal dignity.*

Further details can be found at www.dh.gov.uk

Choosing Health: Making Choices Easier

This public health white paper sets out the Government's vision for enabling people to improve their health by giving coordinated and consistent health messages in step with the way people live their lives. The white paper includes measures to promote health and tackle health inequalities.

The key priorities for action are:

- *reducing the number of smokers*
- *reducing obesity and improving diet and nutrition*
- *increasing exercise*
- *encouraging sensible drinking*
- *improving sexual health*
- *improving mental health.*

Further details can be found at www.dh.gov.uk



SECTION 1

introduction and context for the

Community Plan...



National Community Safety Plan

The Plan underlines the need for citizens to be active in helping to identify community safety priorities for their neighbourhoods and to work with the key agencies to make sure they are tackled.

The key themes in the Plan are:

- *making communities stronger and more effective*
- *further reducing crime and ant-social behaviour, creating safer environments*
- *protecting the public and building confidence*
- *improving people's lives, so they are less likely to commit offences or re-offend.*

Further details can be found at www.crimereduction.gov.uk



LINK WITH THE COMMUNITY PLAN

The role of the Hambleton Strategic Partnership is to develop the national Government agenda in Hambleton. The Community Plan takes account of national guidance including rural proofing. There is also a need to highlight how the Community Plan and Strategic Partnership are working towards the delivery of these priorities locally e.g. the development of more sustainable communities and helping to deliver the four priorities outlines in 'Securing the Future'.





help us achieve our goals for a
better community...