

OUR MEMBERS

*Bedale and Villages
Community Plan Forum*

Broadacres Housing Association

*Business Link York and North
Yorkshire*

Churches Together

*Connexions York and North
Yorkshire*

Easingwold and Villages Forum

Environment Agency

*Government Office for
Yorkshire and The Humber*

*Hambleton & Richmondshire
Rural Transport and Access
Partnership*

*Hambleton Area Learning
Partnership*

*Hambleton Association of
Local Development Agencies*

*Hambleton Community Safety
Partnership*

Hambleton District Council

*Hambleton Forum for
Voluntary Organisations*

Highways Agency

Job Centre Plus

Kerfoot Oils

Ministry of Defence

National Farmers' Union

*National Probation Service -
North Yorkshire Area*

*North East Chamber of
Commerce*

*North Yorkshire and York
Primary Care Trust*

North Yorkshire County Council

*North Yorkshire Drug Action
Team*

*North Yorkshire Fire and
Rescue Service*

North Yorkshire Police

North Yorkshire Police Authority

*Northallerton and Villages
Community Plan Forum*

South Tees Hospitals NHS Trust

*Stokesley and Villages
Community Regeneration Group*

Thirsk Regeneration Initiative

*York and North Yorkshire
Chamber of Commerce*

Yorkshire and The Humber TUC

Yorkshire Forward

*Yorkshire Rural Community
Council*

WANT TO GET INVOLVED?

If you are interested in finding out more about the Hambleton Strategic Partnership or would like to get involved please contact:

Community Planning Hambleton District Council

Civic Centre, Stone Cross
Northallerton DL6 2UU

Telephone: **01609 767233**

Fax: **01609 767248**

E-mail: communityplanning@hambleton.gov.uk



COMMUNITY PLAN for HAMBLETON

Copies of the Community Plan have been circulated widely across the district and are also available to view at all Council Offices and Libraries. Alternatively, view the plan on the website: www.communityhambleton.org or order it on CD.



Look out for future updates from the Hambleton Strategic Partnership on the progress of the Community Plan.

© HDC 2007



HAMBLETON STRATEGIC PARTNERSHIP



Who are we?
What do we do?
Please read on
to find out more...



WHAT IS THE PARTNERSHIP?

The **Hambleton Strategic Partnership** brings together a wide range of groups and organisations that operate across the District, covering the public, private, voluntary and community sectors. Each of these partners has a key role to play in developing and delivering the Community Plan, together with a responsibility to work in partnership.

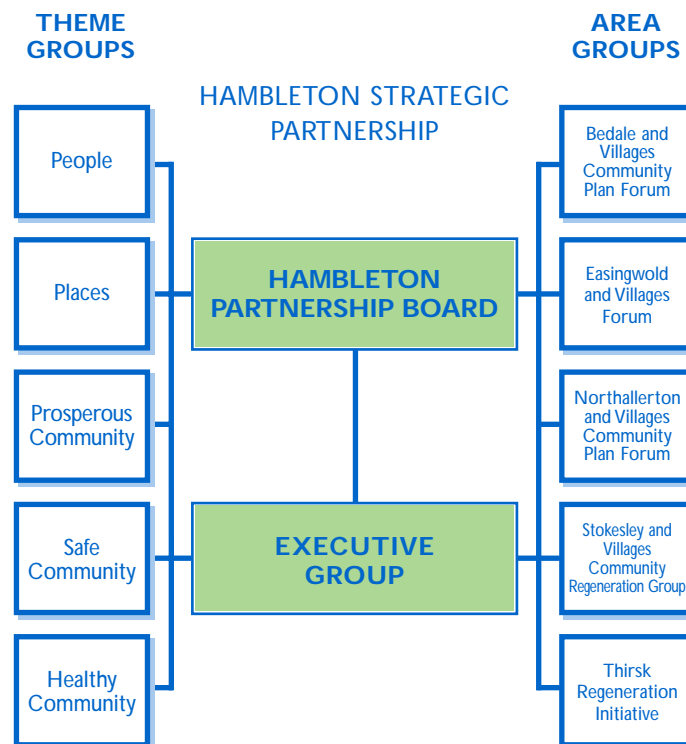
The objectives of the **Hambleton Strategic Partnership** are to work collaboratively to:

- Identify what is **needed locally**, now and in the future, through community consultation and involvement
- Develop and implement a **Sustainable Community Plan** to improve the economic, social and environmental well being for everybody in Hambleton
- Bring together and improve the **planning and co-ordination** of existing and future activities and services of all sectors that operate in Hambleton
- Address **cross cutting themes** of community engagement, sustainable development, diversity and partnership effectiveness.



WHO IS INVOLVED?

The **Hambleton Strategic Partnership** works together to achieve these objectives through the structure illustrated below:



It comprises of four functional levels:

Hambleton Partnership Board – Acts as the strategic decision making body to ensure that the Community Plan is delivered and that each partner makes an effective contribution, with an annually elected chair and vice chair.

Executive Group – Co-ordinates the work of the Theme and Area Groups (a representative from each Theme and Area Group sits on the Executive Group), to ensure there is effective communication and co-ordination between the ten groups, particularly in relation to cross cutting issues.

Theme Groups – Bring together the relevant organisations to develop and implement action plans for each thematic priority. Each group is independently chaired by a lead organisation appropriate to that particular theme.

Area Groups – Develop and implement local action plans that are based on the five Hambleton market towns and their surrounding rural parishes and provide local community input into the Strategic Partnership.

